

FREE - TAKE ONE!

Vol. 29 No. 22

AUGUST 25, 2022

800-543-8271 • 800-665-8875

WEEKLY **TRADER** MAGAZINE



Find us on
Facebook

@myweeklytrader
AUCTIONS PG. 8

VISIT OUR NEW WEBSITE! MYWEEKLYTRADER.COM

**You pull it,
we sell it...**

CHEAP!



Lebanon, MO

22395 Rt. 66

417-588-3555

Fax 417-588-8955



U★PULL★IT

SELF-SERVICE AUTO PARTS

We also have a large inventory
of used tires and be sure to check
out our used car lot!

Mon.-Fri. 8:00am-6:00pm • Sat. 8:00am-4:30pm

WWW.SSUPULLIT.COM

Located next to S&S Recycling.



**Roll-off, Trailer, and
Mobile Crushing
Services Available**

For All Your Metal Recycling Needs

Lebanon, MO

22395 Rt. 66

417-588-3555

Fax 417-588-8955

Mtn. Grove, MO

8930 First Rd

417-926-3360

Fax 417-926-0180

Monday-Friday 8:00am-4:30pm (Closed 12pm-1pm Lunch)
Saturday 8:00am-Noon

email: contact@ss-recycling.com

Buyer of all types of scrap metal.

A heavy-duty offer for a heavy-duty tractor.



L2501DT

24.8 HP

Durable cast iron and steel design



Kubota®

Together we do more®

Save big on our L Series tractor and handle every job with a wide range of versatile performance-matched attachments. Kubota tractors are rated #1 for durability and owner experience in the U.S.* Stop in for a demo and to claim this offer on select models today.

\$0 DOWN 0% APR UP TO 48 MONTHS

PLUS

SAVE UP TO \$1,100

VISIT US TODAY FOR THIS LIMITED-TIME OFFER



L2501DT PACKAGE

\$22,495

Quarles Supply

3251 S Springfield Ave
Bolivar, MO 65613
417-777-2391

KubotaUSA.com

*Award based on 2021 Progressive Farmer Reader Insights Tractor Study. © Kubota Tractor Corporation, 2022. \$0 Down, 0% A.P.R. financing for up to 48 months on purchases of select new Kubota L2501DT equipment at participating dealers in-stock inventory is available to qualified purchasers through Kubota Credit Corporation USA; subject to credit approval. Example: 48 monthly payments of \$20.83 per \$1,000 financed. Customer instant rebates of \$700 are available on qualifying finance or \$1,400 on cash purchases of L2501DT equipment. Additional instant rebate of \$400 is available with purchase of one new qualifying implement. Some exceptions apply. Offer expires 9/30/22. Terms subject to change. For complete warranty, disclaimer, safety and product information see dealer or KubotaUSA.com.

Progressive
FARMER
READER INSIGHTS

2KBB04032_Std_L_L2501_F1_7-1_0628

TIME FOR PRECISION

Hustler's residential mowers are built stronger and perform faster, allowing you to quickly maneuver around obstacles with ease. Tackle your lawn in record time with unparalleled precision, and use the time you save to do the things you love.



AGRI-ENTERPRISES

For Outstanding Products & Service

1-1/2 Miles South Of Licking, MO On Hwy 63

573-674-2203 • 1-800-653-7152 • www.agri-enterprises.com

STORY & PICTURES BOOK OF OLD LINN CREEK: Haha Tonka and Camden County, by T. Victor Jeffries, 72 pages. \$5.00 postpaid. (417)532-2045. (Leave message and phone number). Lebanon.


CUSTOM SAW MILLING: 417-533-4607. 417-664-1195. Lebanon.

POLK COUNTY, MO. SESQUICENTENNIAL PHOTO ALBUM 1835-1985: By George Hopper and James Sterling, \$25.00. 417-532-2045. Lebanon. (Leave message and phone number).

WANTED: Old Pinball Machines and Juke Boxes. 573-424-7200.





WEATHERED BARN WOOD SIDING: 10" wide. 573-729-7226. www.pineridgerustic.com Salem.

LAWNMOWER MTD YARD MACHINE: 4H.P. Briggs & Stratton engine, 22" cut, self-propelled mulcher. \$125. 210-787-8222. Linn Creek.



TIM'S USED CARS

(573) 341-3828 • 1334 South Bishop (Hwy. 63) • Rolla, MO
Next to Hwy CC • www.tims-used-cars.com

	<p>2017 CHEVY CAMARO LT R/S, V-6 auto, Power Equipped, Sunroof 69,xxx Miles Only \$24,800</p>		<p>2017 DODGE JOURNEY SXT FWD, V-6 auto, Power Equipped, 7 Passenger, 59,xxx Miles Only \$17,500</p>
	<p>2014 FORD F150 XLT Crew Cab, 4x4, 5.0 V-8, Power Equipped 89,xxx Miles Only \$22,900</p>		<p>2016 RAM 1500 REBEL Crew Cab, 4x4, 5.7 Hemi, Leather, Loaded w/Options 116,xxx Miles Only \$29,800</p>

LARGE SELECTION OF CARS, TRUCKS, SUVs & VANS!

0% for 4 Years



HEATMOR Outdoor Wood Furnace
as low as **\$238** per month

HEATMOR MIDWEST
Licking, MO 65542 • 573-674-2962

LOG SIDING: 2X8 Pine/Western Cedar
www.pineridgerustic.com 573-729-7226. Salem.

USED MOBILE HOMES: Call David at VILLA HOMES IN ROLLA 573-578-8072. Rolla.

TINY HOMES: We gottem 573-881-3283

BUYING MOBILE HOMES: Call David at VILLA HOMES IN ROLLA 573-578-8072. Rolla.

RARE PICTORIAL HISTORY OF THE KOREAN WAR: published 1954, hardback, 386 pages, \$9.50. 417-532-2045. Lebanon. (Leave message and phone number).

KUSTER LOGGING

BUYER of Standing Timber Oak and Walnut

Dozing Now Available

417-259-0047

References Available



WANTED TO BUY ANTIQUE CARS: Convertible, Corvettes, unrestored, motors, parts considered. 870-324-1154. Ash Flat.

TRANSFER PUMP: Cost \$215 Selling for \$100. 417-753-2747. Rogersville.

WORKING STOCK: Blue and Red Heeler puppies. 417-664-5926. Conway.

For all things outdoors, Earth Manufacturing LLC!



Come see what makes Earth Outdoor Manufacturing and services different.

417-926-4136 • 9871 E. 20th St., Mtn. Grove
earthoutdoorfurnaces.com • freedomoutdoorproducts.com

AUSTRALIAN SHEPHERD PUPPIES: 2 rounds of shots, tails & dewclaws done. Ready to go. Tris for \$150. 417-458-1047. Roby.

WE HAVE MOBILE HOMES: Instock new arrivals (8) homes, need to go as soon as possible! 573-499-9993. columbiadiscountshomes.com

TRUE MODULARS: 30 to 60 day delivery available, 3 and 4 bedroom 573-657-7040 chateauhomes.net

WINCHESTER: Model 1902, model 1906, model 337. 573-764-4435. Gerald.

FOR SALE MEN'S LEVIS: size 36x36, 502 style. \$25 a pair. 573-205-9401. Sullivan.



Call to Order
417-993-3017

Meadowview Dutch Market

Bulk & Surplus Groceries • Prices Subject to Stock on Hand

DELI SPECIAL

SMOKED GREEN ONION CHEESE REG. \$6.75 LB. SALE \$6.25 LB.

GERMAN BOLOGNA REG. \$4.79 LB. SALE \$4.29 LB.

TRY our Fresh Homemade DELI Sandwiches: TURKEY, HAM, ROAST BEEF, ITALIAN, BLT'S, PULLED PORK AND BLT PULLED PORK (MADE YOUR WAY)! COME IN OR CALL to order! ALSO Custom Deli trays! Veggie OR FRESH Meat-N-Cheese!



Jimmy Dean Fully Cooked Sausage Links
99¢ 9.6 OZ.



Individually Wrapped Real Butter Chips
\$1.75 LB. OR **\$25.50** 17 LB. CASE

Fully Cooked Breaded Pork Patties
\$1.69 LB.

Jimmy Dean Hickory Bacon
\$2.75 12 OZ.



Teriyaki Pork Tenderloin
\$1.99 LB.

Wright Applewood Bacon
\$5.50 1.5 LB.



Wright Hickory Bacon
\$8.50 2.5 LB.

Sale Dates August 24th 2022 to August 30th, 2022 while supplies last!

TAKING ORDERS FOR NEW YORK CONCORD GRAPES

\$15.50 approx 18lb. box



CALL 417-993-3017

ICE CREAM SALE!!! 10% OFF QUARTS, PINTS AND NOVELTIES

EXCLUDES HIGHLAND PRODUCTS!



MEADOWVIEW DUTCH MARKET
417-993-3017 Hours: Mon-Thurs 8-5pm
Fri 8-6pm • Sat 8-5pm
23 Miles West on Hwy 64 • Right on T Hwy
9 miles • Left on E Hwy 1 mile on Left

NOW ACCEPTING CREDIT, DEBIT CARDS & EBT

DUTCH COUNTRY STORE, LLC
573-378-4395
Hours: Mon-Thurs 8-5pm
Fri 8-6pm • Sat 8-5pm
5 miles East of Versailles off Hwy C on Kelsay Road

NEW MOBILE HOME STOCK: Just received (5) new units, they gotta go! 573-657-2176. amegamobliehomes.com

I BUY..... used mobile homes. Call or text 573-338-6250 or email GregS.CDH@outlook.com

REGISTERED HEREFORD & ANGUS BULLS: Home raised, Some Show-Me Select Qualified. 573-701-7828. Belgrade.

STIHL FS100RX HAND TRIMMER: Cost new \$350. Now at \$185. Like new. 417-844-4319. Springfield.

HEARTH CRAFT GLASS BI-FOLD FIREPLACE DOORS PURCHASED AT FORSHAW'S FIREPLACE: Antique brass. \$160 obo. 636-239-2695. Washington.

2004 F150: 5-4 crew 4x4. 151k. Engine needs TLC. \$8000 obo. 573-261-0513. Salem.

FULL SIZE BED: clean. \$100. 573-205-9401. Sullivan.

1954 CHEVY BEL AIR: 4-door. \$300. No title. 417-859-4401. Marshfield.

FRANKLIN QUICK-CHANGE REAREND: Aluminum, w/ axles & tubes, brakes. \$650. 573-528-2821. Waynesville.

NEW ADA HEALTH EQUIPMENT: Scooters, chairs, etc. 573-699-4351. St. James.

RUGER AR15: w/ Nikon scope, 3-30RD mags and 400 rounds of ammo. Bought new. Like New. \$900. 417-844-4319. Springfield.

LIGHTLY EXPERIENCED GOLF BALLS: \$3 a dozen. 417-818-3469. Strafford.

OFFICIAL TRACTOR OF TOUGH™

INTRODUCING THE ALL-NEW 5100 SERIES



Marshfield Machinery Inc.

222 E. Madison • Marshfield, MO 65706
417-859-2117 • www.marshfieldmachinery.com

*2018 data including all Mahindra group brand sales.
MahindraUSA.com © 2020 Mahindra USA Inc.



NEW MAHINDRA TRACTORS

1626 4WD & LDR 26HP	IN STOCK
2638 4WD & LDR 38HP	IN STOCK
4540 4WD & LDR 41HP	IN STOCK
4550 4WD & LDR 48 HP	IN STOCK
2660 4WD & LDR 60HP	IN STOCK
2670 CAB 4WD & LDR 70HP	IN STOCK

USED TRACTORS

MF 4610 99HP CAB 4WD LDR	45,000
AC 7010 106 HP CAB	9,500
MF 135 36 HP	2,750

USED ROUND BALERS

MF 1745 4X5	10,000
MF 1734	5,500
CASE IH 8420	3,500
HESSTON 560 5X6	2,000
NH 850 5X5	1,500

USED HAY MOWER

HESSTON 1120 9FT	1,500
------------------	-------

USED MISC.

HAYBUSTER 107 DRILL 10FT	9,500
SITREX 8 WHEEL RAKE	1,750
M&W 8 WHEEL RAKE	1,750
LELY 8 WHEEL RAKE	1,750
HESSTON 3PT TEDDER 10FT	1,750

Marshfield Machinery Inc.

222 E. Madison
Marshfield, MO 65706
417-859-2117
www.marshfieldmachinery.com

ASST. MANAGER NEEDED

American Made General Store is looking to fill the Asst. Manager position in our Rogersville store. Candidates should possess retail experience and be knowledgeable in day-to-day operations. Excellent customer service skills a must. Salary based on experience. Please forward resume to hr@americanmadestore.us

AMERICAN ★ MADE
GENERAL STORE

LAKE OF THE OZARKS: Lots \$4,950 - \$125 down, \$69 per month. Beautiful trees, free lake access and boat ramps, lots are a short distance from the lake, no credit checks, owner financing, immediate possession or own for investment. **Also:** acreage tracts. Missouri conservation boat ramp with covered dock and rest rooms near by. **Prices good through August 29th.** Hwy 135 between Stover and Sunrise Beach, MO. Take Lake Road 135-12 to the Ivy Bend Land Office. Closed Tuesdays and Wednesdays. Call anytime. 573-372-6493.

SLIGHTLY USED PUZZLES: Will sell or trade. 417-818-3469. Strafford.

1978 RANCHERO ACC: original, except new 351 long block auto GT model. \$12,500. 314-378-9816. St. Charles.

LIONEL TRAIN SET: Steam engine, tender, caboose and other car, track and transformer. \$195. 573-364-7465. Rolla.

EARLY 1900's CAMEL BACK STEAMER TRUNK: Oak, 5 strap, solid, nice condition. \$95. 573-364-7465. Rolla.

NEW EXHAUST FAN: 30x30, belt drive, 1/2 horse motor, rated 3500 cfm. \$195. 573-364-7465. Rolla.

ELVIS RECORDS: no barcode, mint condition, 20 records \$100 each. 573-205-9401. Sullivan.

1500 VINTAGE WRISTWATCH DIALS:
\$100. 573-764-3517. Call in PM.

SQUASH: \$0.75 each + Produce. Also have vine-ripe tomatoes. 2659 Beach Rd. 417-468-2255. Conway.

FIREPLACE LOG GRATE: 28" in width.
\$25 obo. 636-239-2695. Washington.

CALUS LOGGING

20 YEARS EXPERIENCE

Buying Standing Timber
Walnut & Oak

Joe Calus, Owner
417-926-4606 • MTN. GROVE

CERTIFIED

BOAT: 16FT Low line aluminum, 50 horsepower Evinrude engine, 3 custom seats & trailer. \$1250. 417-753-2747. Rogersville.

RUBBER & LEATHER BOOTS AND HIP WADERS. Men's 11, Women's 7, some insulated. \$15-\$40 obo. 636-239-2695. Washington.

2022 FALL Lebanon Community GARAGE SALE & MARKETPLACE
at the Cowan Civic Center 500 E. Elm St.
Lebanon Mo 65536

FRIDAY 09-02 • 10AM-4PM
SATURDAY 09-03 • 8AM-3PM

FEATURING A MIX OF BOTH OLD AND NEW ITEMS.

FREE ADMISSION TO SHOP

- Garage Sale • Flips • Finds • Crafts
- Boutiques • Antiques • Collectibles
- Overtstocks • Buyouts & More.

FREE GOODIE BAGS TO THE FIRST 50 SHOPPERS DAILY!

OVER 150 BOOTHS

BOYS NEW 20" BIKE: has training wheels, hand breaks & pegs. Paid over \$100. Will take \$75. 573-205-9401. Sullivan.

3 GENTS WITTNAUER WRIST WATCHES: 10k gold + 23J. All \$200. 573-764-3517. Call in P.M.

HARLEY FAT BOBS: Custom flame paint w/ gas caps + lines. \$100. 573-764-3517. Call in P.M.

TRAILER: 6x10, single-axel flatbed trailer. \$500 or trade for anything. 573-734-2822.

WE BUY White Oak Logs!

- ✓ Top prices for your logs
- ✓ Experienced log buyers
- ✓ Professional service

Chad Cook | Salem Wood Products

417.718.2950

5 miles north of Salem, MO on Hwy 19



INDEPENDENT STAVE COMPANY
Log Procurement & Sales

www.independentstavecompany.com

COLT REVOLVER DEALER
CATALOGS: Circa 1950's + 1960's. All for \$100. 573-764-3517. Call in P.M.

110 PORCELAIN POCKET WATCH
DIALS: Perfect for arts & crafts. \$100. 573-764-3517. Call in PM.

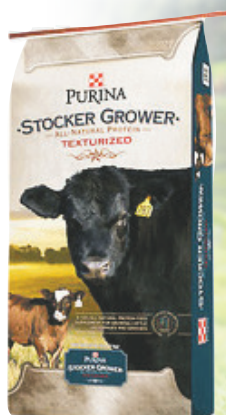
BALE SLED: \$125. 636-583-5074. Union.

DARDEN PROFESSIONAL TIMBER HARVESTING, BUYING STANDING TIMBER: Great prices, improve wildlife habitat and improve forest health. State Certified & Fully Insured! 573-247-4808. Salem.

1948 FORD COUPE: \$1,500 or trade. 573-734-2822.

KEEPING YOUR HERD IN TOP PRODUCTION

WE ARE THE TRUSTED SOURCE FOR ALL YOUR HERD'S NEEDS.



NOW OFFERING WEEKLY DELIVERY TO THE MOUNTAIN GROVE AREA!

Family owned and operated since 1950.



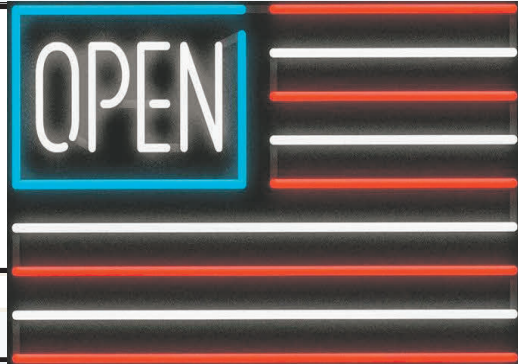
Hudson Feed & Grain
417-532-3921

316 W. Commercial St., Lebanon
www.hudsonfeedandgrain.com





Sale Ends August 31, 2022
Seymour, Missouri 417-935-4201



Pole Barns & Post Framed Buildings!

23'x32'x10' \$8,449 Material Only \$9,999 Labor Included	23'x40'x10' \$9,699 Material Only \$11,635 Labor Included	30'x40'x10' \$11,739 Material Only \$14,260 Labor Included	40'x60'x12' \$20,550 Material Only \$25,950 Labor Included
-------------------------------------------------------------------------------------------	--------------------------------------------------------------------------------------------	---------------------------------------------------------------------------------------------	---------------------------------------------------------------------------------------------

Call for free quote, brochure & color chart.
 Other sizes also available.



NOBODY, BUT NOBODY BEATS OUR PRICES!!!

10 ft. Slider • Engineered Trusses 8' O.C. • 2x6 Treated Bottom Wrap • Screws • 2x10 Top Wrap • 2x4 Purlins • Full 29 Gauge Steel • Plus 3 ft. Entry Door with Lock
 OPTIONS: Sidewall Heights on all Buildings 10', 12', 14' & 16'. Overhead Garage Door. Skylights. Insulation. Wainscoting. Insulated Vinyl Windows. Cupolas. Labor Rates Slightly Higher over 50 Miles from Seymour. Call for YOUR FREE QUOTE TODAY!!!!

PAINTED WHITE, GREEN OR TAN METAL\$116.20			
10' - \$36.80	12' - \$44.16	16' - \$58.88	
MIX & MATCH METAL\$59.99			
8' - \$15.20	10' - \$19.00	12' - \$22.80	
GALVALUME METAL\$99.99			
10' - \$31.66	12' - \$38.00	16' - \$50.66	
GALVANIZED CORRUGATED METAL SOLD OUT!			
8' - \$9.84	10' - \$12.30	12' - \$14.75	16' - \$19.67

IN STOCK

40yr Painted Metal
Call

KNOTTY PINE DOORS
 Starting at
\$164.99

****Prices subject to change without notice****

LP SMARTSIDE T-5 LAP B GRADE \$43.59/SQ

Car Siding!

1x6 White Pine Siding **79¢** In ft
 1x8 White Pine Siding **\$1.05** In ft

* 4 Profiles to choose from!
 Broken Bundles Add 10¢ Per Ft.

4x8 Sheeting

Less than full units Add \$1 per sheet

3/8" Beaded Paneling	\$24.99
7/16" T111 Siding	\$SOLD
Paneling	\$SOLD
1/2" Plywood	\$SOLD
3/4" Plywood	\$49.99
3/16 Pegboard	\$12.99

LOTS OF MATERIAL AVAILABLE
FOR THOSE IN HOME PROJECTS!

NEW PACKAGE HOMES



Shown with Available Options

Your Choice of either:

Stock 3/8" T111 Siding w/1x4 Pine Window & Door Trim
 - OR -

7/16" OSB & House Wrap ready for other finish options

2x6—16" on center-Exterior Stud Walls
 Residential Roof Trusses-2' on center
 4/12 pitch with 1' over hang

40 year Painted Metal roofing in 20 Different Colors

Profile Ridge Vent - Ventilated Ridge Cap

Vinyl Center Vent Soffit

Color Matched Metal Fascia & Gable Trim

2 - 3' 6 Panel Entry Doors

4 - 3'x4' Vinyl Insulated Windows

ALL FIGURED FOR SUITABLE CUSTOMER SUPPLIED SLAB OR SUB-FLOOR

Price for Basic Materials Package (No Labor at this Time)

20x24(480 sq. ft.)	20x32(640 sq. ft.)	20x40(800 sq. ft.)	28x40(1120 sq. ft.)	28x48(1344 sq. ft.)
\$14,450	\$16,999	\$19,999	\$24,999	\$27,999

REAL WOOD SIDING

2x6 Log Siding \$1.96 In ft

1x8 Beveled Cedar from- 99¢ In ft

T1-11 Siding from \$28.99

DECK PACKAGES

Materials Only

8x8.....\$349.00	10x12.....\$899.00
10x10.....\$599.00	10x16.....\$1169.00
12x12.....\$1099.00	12x16.....\$1379.00



Now Stocking Quaker Vinyl Windows

2030 \$ 163.99	3030 \$189.99
3040 \$206.99	3052 \$225.99
3040Twin \$453.99	3052Twin \$497.99



LUCKY DISCOUNT LUMBER

417-935-4201

455 State Hwy C • Seymour MO 65746

www.luckydiscountlumber.com



*Some restrictions apply see store for details. Prices subject to change without notice.

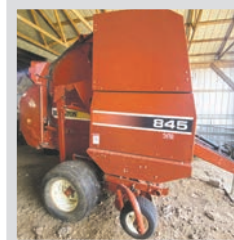
GARY SEXTON AUCTION

Estate of Billy A & Hazel Drye

MONDAY, SEPTEMBER 5TH, AT 10AM

THAYER, MISSOURI • LOCATION - From Thayer, Mo travel east on Hwy. 142 approximately 6 miles to CR # 249 then right 1/8 mile to Auction: 1745 CR 249, Thayer, Mo. Watch for auction "Today" signs.

AT PUBLIC AUCTION Approximately 102 acres of rolling established pasture land with fenced perimeter - Large Barn - Towering Red Oaks... Perfect for home sites! Frontage on 2 sides by County Road # 257 & #288. Lots of grass and stock ponds. **TERMS:** 10% down day of Auction, balance due upon closing. Real Estate sells at noon. Have all financial arrangements made prior to auction. **INSPECTION:** Land tour - Sunday, August 28th from 1:00 - 3:00 p.m. **DIRECTIONS:** From 142 travel south approximately 1 mile on #249 to #V-264 then left approximately 1/2 mile to #257 then right 1/2 mile to property on right: Sells at 12 noon Sharp! Garysexton.com **LEGAL:** Section 5 - Township 21N - Range 4W. **FURNITURE - APPLIANCES - HOUSEHOLD** GE clothes washer - Kaiser dryer, upright deep freezer, custom oak furniture by Elton Batard including 10' oak desk with bookshelves - oak gun case, oak quilt case with glass top, oak entertainment center; roll top desk, 4 pc bedroom suite, chest of drawers, iron bed, stand tables, recliners - couch - lamps, coffee & end tables, large flat screen TV, 100 year old china cabinet, old chamber pot w/base, old coin sets, antique dishes, antique cookie jar collection, old fiddle w/ case, old scales, trunks, quilts, old gigantic laundry basket, old mirrors - blue jars - old glass minnow bucket, old bouncy horse, blonde furniture, cast iron, old DX wiper blade box, banana seat bike, very old 5 legged dining table w/chairs in good condition! Baseball card sets, Frederick Willy's 1960's pool table, desks - office furniture, jewel chest full of costume jewelry, kitchen items, wall decor, exercise equipment, artist and painters supplies, 2 sewing machines, ping pong table and lots of old items. **TRACTORS - PICKUPS - TRAILERS** 2555 John Deere 2WD cab tractor - 146 front loader/cab, 6218 hours; 2350 John Deere 2WD with 146 loader - 4680 hours, 2940 John Deere tractor - MFWD - cab & 265 front loader, 1100 Massey Ferguson tractor with front loader, 2018 Ford Edge with 22,629 miles, 1-owner, 2000 Ford F250 Super Duty Power Stroke - auto - 119,721 miles, ext cab, 1994 Ford F250 XL pickup - auto - 189,000 miles, gas engine, 4x4; 1989 GMC S15 4x4 flat bed, 1965 Ford Mustang Convertible (Project Car) with ac, White (Garaged), IH single axle dump truck, 16' stock trailer, MG Roadster King convertible on VW frame, 926 John Deere disc cutter - good condition, 20' flat bed gooseneck trailer, fuel tank/stand, Rhino 15; batwing brush cutter, Honda Rancher ES 4 wheeler, old DX sign, poles, 845 Hesston round hay baler - very clean! 6' rock rake, Sitrex RT 5200 hay tedder - good condition, V-hay rake, older 301 JD grain wagon, small off-set disc, 6' drag type brush cutter, 10' tiller, small 2-4 ton grain bin, shop full of tools, Grumman canoe, saws, air compressors, welders, torch oxy/acetylene, Lincoln wire feed, presses, old farm equipment. Years of accumulation.



LUNCH SERVED DAY OF AUCTION

This listing subject to additions/deletions



www.GarySexton.com

Main Office Location:

Main Office Location: 1028 Porter Wagoner Blvd. West Plains, MO 65775

Gary Sexton: 417-255-7001 • Gary@Garysexton.com

Major Private Collection

The Tommy M. & Tom K.
Schulz Family Collection

FIREARMS AUCTION

SATURDAY • AUGUST 27 • 9:00AM

Held At "The Exchange" at Wall Street Cattle Co.

14900 Highway KK • Lebanon, MO

Auctioneer's Note: Tommy M. Schulz was a US Air Force Veteran and avid firearm enthusiast for many years. After Mr. Schulz's death, his son Tom K. Schulz continued to add to his father's already impressive collection. As Mr. Schulz is moving to the west coast to pursue a career opportunity, he has decided to liquidate this outstanding collection at public auction. The Schultz Collection includes over 20 M1 Garand Rifles, several M1 Carbines, nearly 40 Enfield variants, competition guns, high-grade collector rifles and many, many, many others.



- Over 20 M1 Garands
- Several M1 Carbines
- Over 40 Enfield Variants
- Competition Guns
- Very Lg. Line Rifles, Shotguns & Pistols
- Very Rare & High-Grade Collector Guns
- Randall Made & Other Knives
- Gun Scopes & Accessories



BID LIVE

Live Online Bidding proxibid

Over 400 Firearms

Ultra Rare Winchester 1873
.22 Extra Long (Documented)

DIAMOND S AUCTION
REAL ESTATE CO.

1-877-907-3000

www.diamond-s-auction.com



**Consignments
Welcomed!**

JR'S 5TH SEMI-ANNUAL CONSIGNMENT AUCTION

Saturday, September 3, beginning at 8:30 A.M.

Located at: 4875 Hwy BB, Hartville, MO, 65667. From Lebanon, MO take Hwy 5 South approx. 30 miles to Hwy Z, left on Z, 2 miles to Hwy E, right on E to Hwy BB, right on BB to auction on left. Watch for auction today signs.

FARM EQUIPMENT

Ground drive sprayer — 4-258 rake rebuilt — 56 NH rake
2-256 rake rebuilt — 660 JD rake—259 NH rake
28 blade JD KBA disc — 125 JD transport disc — IH #9 mower
4-IH #9 trailer gear mower w/ dolly and 7' bar rebuilt field ready
5' brush hog w/ 23 hp vanguard engine — 3pt 6' blade
2-IH #7 mower rebuilt — 2-IH #9 mower rebuilt
JD model H manure spreader — NH 402 crimper
Adams leaning road grader — JD Big 4 mower
Galvanized IH manure spreader field ready enclosed gear box
269 NH Hayliner baler/wire tie
5-69 NH baler — 5' brush hog
IH 1 row cultivator — Transplanter
Wagon running gear — 1 horse cart
Master mill hammer mill w/ ilec motor
1 horse wagon gear — 3-New 6 ton wagon gear
New 3', 4', 6', and 8' cultimulchers
New forecarts — New bale movers
Heavy duty breaking sled w/ tongue draft size
JD tractor bucket — Bale spike
Pickup ladder rack — Concrete mixers
Used WH 715 rigid beam plow — Used WH 715 leaf spring plow
New WH 715 rigid beam plow — New WH 715 leaf spring plow



HOUSEHOLDS & ANTIQUES

Several Pressure cookers — King cutters—Antique Maytag with wringer
Singer sewing machine heads— Several 31 day clocks
Oil lamps—Magazine racks —Croquet set
Dresser — China hutch — Children picnic table
Double hickory rockers and gliders — Hickory porch swing
Hand crank corn sheller —Several cast iron butcher kettles
Several sausage stuffers—Several #22 sausage grinders
Several ice tongs — Lot oil lamps — Several Dazer butter churns
Lot qt size Ziploc bags



Pallet of new Chupp Bros. items including: tables, chairs, office chairs, tubs, halters, lead ropes, wheelbarrow

HORSES AND TACK

1 yr black standard bred cross mare
17 yr standard bred mare and in foal for 2023
2 yr standard bred gelding should be started by sale time
3 yr paint cross mare broke
Load expected from Jr Yoder— Load of top draft horses from Kansas
New draft harnesses—New driving harnesses
Lead ropes, halters, and check lines



Lunch stand by Amish community benefiting Amish parochial schools. Breakfast sandwiches, Fish, BBQ chicken, donuts, & baked goods

For more auctions go to www.auctionzip.com ID # 47012

Auctioneers
Larry & Loren Martin



MARTIN AUCTIONS
1-660-337-6471



Auctioneers
Mel Yoder

Thanks, Larry

GUNS, AMMO, AND BOWS

Savage 64 cal 22 semi auto — Mossberg model 835 12 ga pump
Thompson Center Venture 7 mm Rem mag like new
Marlin 336 30-30 lever action
Mossberg Patriot 308 cal w/ scope (NIB)
Stevens 12 ga single shot — S.S. Kresge 20 ga single shot
Stevens bolt action 30-30 w/ scope
Glenfield mod 75 22 auto — Win 1200 12 ga pump
Marlin mod 60 22 auto w/ scope
Rem 760 Gamemaster 270 pump — Rossi 243 single shot
Savage Axis 243 w/ Bushnell scope—Mossberg Int'l 817 17 HMR w/ scope
Savage Axis 308 w/ Bushnell scope — Stevens mod 325c 30-30 bolt action
Ted Williams mod 200 12 ga pump
Charles Daly 12 ga pump 3 1/2" (NIB) — Hatfield 410 single shot (NIB)
Revelation mod 330 410 bolt action — Glenfield mod 25 22 bolt action
Savage mod 220D 12 ga single shot — Tri-Star 20 ga pump 3" (NIB)
Coast-to-coast 12 ga single shot — Stevens buckhorn 22 bolt action
Savage mod 340A 30-30 bolt action — Savage Springfield 67 20 ga pump
Marlin mod 81 22 bolt action w/ scope
Savage mod 111 30-06 Thumb hole laminate stock w/ Nikon scope
Stone Mountain arms 50 cal muzzle loader (stainless)
Traditions tracker 50 cal muzzle loader (NIB)
Mossberg ATR 30-06 w/ scope
Heritage rough rider 22 pistol — Mossberg 243 Win w/ scope
Mosser model 98 8MM w/ scope
Ammo: 243, .22, 270, .420, 30-06, 12 ga, 30-30, 20 ga, 308, 25-06, 12 ga 3 1/2 #4 turkey loads, 20 ga #5 3" steel shot
Ten Point cross bow
Compound bows: Bowtech — Reflex in case — Bear in case — Several other bows

LUMBER, SHEDS, TOOLS & MISC.

Fuel tank — Farm gates — Corral panels
New wheels — New neck yokes and eveners
Hog scrapers — 2 ton chain hoist — Several small chain hoist
Push garden cultivator — 10+ breast drills — Several Yankee screwdrivers
20+ 3 tine hay forks and 4-5-6 tine manure forks — Several silage forks
Lot shovels, spades, garden hoes — Lot hand saws — Several snow sleds
Lot foot hold traps (some new) — Several log tongs
Several pitcher pumps — Several hand crank sharpeners
Set hay grapple forks — New and used pine lumber
Several hundred board ft walnut lumber planed and dried
New rough cut pine lumber including 2x4 and 1' bys
Used roofing metal — 6 like new chicken nest boxes
5x6 shed — 9x18 run in shed



We have lots of good quality items already consigned and more expected at sale time. Expect 2 or 3 auction rings all day. All items left 20 days after sale will become property of JR's Auction unless approved by owner. Consignment receiving will be taken week of auction Aug 29-Sept 2 from dawn to dusk. No consignments morning of sale unless arrangements have been made. Will not be accepting appliances or wooden windows. To consign call Jr's auction at 417-741-2070 or 417-741-2312. For horses call 417-554-3201. Hope to see you there.

Terms: Cash or check with ID. Not responsible for accidents. Statements made day of auction take precedence over printed material

Sam **CRAWFORD AUCTION SERVICE** LLC

As I've sold my farm, will sell the following located 1½ miles North of Urbana, MO on Hwy. 65 to Bower Rd., then East 6/10 mile to Skyview Rd., then North 1 mile.
 Watch for auction signs.

SATURDAY, AUGUST 27TH, 2022 - 9:30 AM

GUNS - 4-WHEELERS - MOWERS - TOOLS - MISC.



GUNS - SELL AT 9:30

Central Arms 410 Ga. Double Barrel
 Lorcin L380, 380 Pistol
 Blackpowder 45? Pistol
 Approx. 80 Boxes Ammo, 6.5, 6.8, 30-06,
 308, 270
 30 Carbine 38 Shotgun
 Smith & Wesson Bolt Buckler
 Hunting Knives

MOWERS & 4-WHEELERS

SELL AT 12:30

Hustler X One Zero-Turn Mower, 72"
 Kawasaki Motor, 64 Hrs., Nice
 Scag Freedom Z Zero-Turn Mower, 52"
 John Deere X485 Lawn Tractor, Water
 Cooled, Power Steering, 72" Deck, Runs
 Good
 Kawasaki 750 Brute Force 4-Wheeler,
 Camo, Low Miles
 Polaris Trail Boss 330, New Tires
 Honda Recon

STORAGE CONTAINER - TOOLS

40' Storage Container
 Eagle Upright Twin Cycle Air Compressor
 Porter Cable Job Site Air Compressor
 3 Cutting Torch Sets (1 Complete)
 Lincoln 225C Mig Welder
 Miller 50DX Tig & Mig Welder
 Air Arc
 ESAB Plasma Cutter - Needs Work
 10-12 Torch Bottles
 30 Ton Hydraulic Press
 4' Metal Roller
 Bead Roller
 Grizzly HD Drill Press, 1½ HP
 Cherry Picker

Commercial Painter
 Bosch Table Saw w/Stand
 Predator Power Washer
 Marco Commercial Sand Blaster
 Craftsman 3-Tier Toolbox
 Bolt Bin & Bolts
 Lg. Tool Cabinet Base
 3-4 Floor Jacks
 Hydraulic Jacks
 Several Jack Stands
 Lg. A-Frame
 3/4 Socket Set
 Lots Power Hand Tools
 Asst. Cordless Hand Tools
 Battery Charger Booster
 Lot Reamers - Treaders - Drill Bits
 Sev. Sets Hole Punches
 Lot Asst. Wrenches - Sockets
 Welding Lead
 Lot Vise Grips & Welding Clamps
 7000 Portable Generator
 3500 Generator, Needs Work
 HD Welding Table
 Dayton ½ Ton Electric Winch
 135K Space Heater
 Motor Stand
 Set Screw Cabinet
 Sev. Bar Clamps
 Welding Rod
 HD 6" Vise
 Extension Cords
 Concrete Tools
 (3) 327 Motors, 283 Motor
 Sev. Chevy Heads
 Other Car Parts
 2 Chevy Saginaw 3 Speed Transmissions
 Aluminum Truck Ramps, 12"
 8 Castor Wheels on Shocks

Fiberglass Sink
 Wood Furnace
 Gas Cans
 15 Insulated Panels, 3" Out Of Walk-In
 Cooler
 (3) Kayaks - 2 Kids
 10' Tier Rack
 Wood
 Engine Washer
 Pallet Jack
 Wood Whiskey Barrel
 Rods & Reels
 (4) 265-R17 Tires, Low Miles
 Chrome Grill Guard for Dodge
 Dodge Running Boards
 Scrap Iron
 Antique Platform Feed Scales
 Much More!

FURNITURE

Slate Top Pool Table, Nice
 Phillips 72" Flatscreen TV
 4 Pc. King Bedroom Set
 Front Load Washer & Dryer
 Kitchen Cabinet Base & Top Cabinets - White
 Antique Brass Bed
 Antique Cast Iron Bed
 7 Pc. Cast Iron Patio Set
 Blackstone Griddle & Grill
 Some Lawn Chairs

MACHINERY

3 Pc. Firminator No Till Seeder, 4' Good
 3 Pt. Bale Spike
 3 Pt. 5' Blade
 3 Pt. 5' Field Cultivator
 3 Pt. Wood Splitter
 12V Sprayer

Lot Good Tools - Good Auction

Sam
CRAWFORD
Auction Service LLC



Sam
 417-328-9137

Chase
 417-399-1904

TERMS: Cash or good check. Nothing removed until settled for. Not responsible for accidents. Lunch available. Statements made day of sale take precedence over printed matter. All items sell as is. No warranties given or implied.

417-998-6629
Cross Timbers, Mo.

CrawfordAuctionService.com

Chance, CAI
 417-298-1751

Tom Poynter
 Jack Lancaster

LARRY JAMES

PUBLIC AUCTION STOCKTON, MO

AUCTION

As I am moving we will sell the following Real Estate, Car, Household, Collectibles, and Misc. at the Home located at 708 S. High Street Stockton, MO. From the Sq. go South on 39 Hwy. to Oak Street, go West one block to High Street to the Auction on

Sat. Sept. 3, 2022 at 9:00 am

WATCH FOR AUCTION COMPANY SIGNS • LUNCH SERVED

FOR MORE PICTURES GO TO: WWW.BRUCEANDLEANAUCTION.COM



REAL ESTATE • SELLS AT NOON

Selling a 3 Bedroom, 1 1/2 Bath Home of approx. 1650 sq. ft. Home has a large Living Room w/Brick Fireplace w/Electric insert, Formal Dining Room, Kitchen/Dining Room Combination w/built in Electric Range, Oven & Dish-Washer. Lots of Cabinet & Closet space throughout. Home has a 2 Car attached Garage with Door Openers and a Paved Drive. Home has Central Air & Electric Heat with a Water Softener. Home has a Covered Front Porch, and a 20' X 25' covered back Patio. Home is sitting on a large level lot with lots of good shade trees and a fenced back yard. Real Estate has a 12' X 20' Storage Building. Home has City Water & Sewer. Home is in very good condition and ready to move in. For more info contact Auction Co. Real Estate sells at 12:00 noon with owner approval and they are ready to sell.



AUTOMOBILE

2000 Lincoln Congressional Town Sedan 4 Door Car, 4.6L, Automatic Transmission, Fully Loaded. 99,131 Second Owner Miles (nice car)

HOUSEHOLD CONT.

- Lot of Towels, Linens & Bedding
- Toshiba Laptop
- 2 Computer Monitors

HOUSEHOLD

- LG Side by Side Refrigerator/Freezer
- Whirlpool Automatic Washer W/Stainless Tub
- Kenmore Electric Dryer
- Sm. Coronado Chest Freezer
- 50" Sanyo Flat Screen TV
- Samsung 32" Flat Screen TV
- Entertainment Center
- Round Dining Table W/6 Chairs
- Lrg. 7' Glass Fronted Hutch
- 6' Glass Fronted Hutch
- 3 Cushion Divan W/2 Cushion Matching Love Seat
- 3 Rocker Recliners
- 4 Wooden Bar Stools
- Cradle Rocker
- Maple Drop Front Desk
- 4 pc. Queen Size Bedroom set W/Mattress
- 4 pc. Poster Bedroom set W/Mattress
- King size Electric Lift Bed W/Mattress
- 3 Pc. Coffee & End Table set
- Tea Cart
- Sm. Spinning Wheel
- Book Self
- Dressing Bench
- Kenmore Sewing Machine
- Lrg. Lot of Sewing Items
- Several Oil Paintings by Mrs. Dawes
- DVD Player
- Kitchen-Aid Mixer
- Lot of sm. Kitchen App.
- Lot of Pots, Pans & Dishes
- Cook Books

ANTIQUES-COLLECTIBLES

- 5' Glass Fronted Pie Safe
- Oak Spindle Back Rocker
- Ornate Stamped Table
- Bentwood Child's Love Seat
- Round Wicker Table
- 3 Kerosene Lamps
- Rayo Kerosene Lamp
- 12 Place Setting Plus of Blue & White Pfaltzgraff Dishes
- Lrg. Lot of Blue & White Pfaltzgraff Extra Pcs.
- Carnival Glass
- Several Hand Sewen Quilts
- No. 4 Daisy Churn
- 3 (1-2-5 Gallon) Stone Jars
- Wooden Rolling Pins
- Blue Bottle Collection
- Lot of Misc. Ant. Glassware
- Jewelry
- Globe
- Misc. Primitives
- Child's Sled, Poly Tractor & Bike

LAWN-GARDEN-MISC

- 5 pc. Metal Patio Set
- Porch Swing
- 2 Metal Porch Rockers
- Wicker Porch Bench W/Table
- Lawn Chairs
- Gas Grill
- B & D 12 amp Blower/Vac
- 40" Pull Behind Bay-A-Nut Picker



LAWN-GARDEN-MISC CONT.

- 40" Lawn Aerator W/Seeder Box
- 36" Polly Roller
- Alum. Ext. Ladder
- Misc. Garden Tools
- Concrete Bird Bath
- Wheeled Walker
- Lot of Christmas Decor.
- Lot of Misc.

OWNER: MRS. DIXIE DAWES

TERMS: Everything sells as is, where is. Nothing is to be removed until settled for. Payment of Cash, Check with Proper ID, or Credit Cards. Auction Company or the Owners will not be responsible for loss of items or accidents. Statements made the Day of the Auction take Precedence over Printed Matter.

SALE CONDUCTED BY **BRUCE & Le'AN AUCTION & APPRAISAL, LLC**
THE AUCTION COMPANY THAT APPRECIATES YOUR BUSINESS

For more information and pictures go to our website at www.bruceandleanauktion.com

RONNIE BRUCE - Fair Play, MO
417-777-1685 or 417-654-2214
colronbruce@gmail.com

BRANDON BRUCE
Fair Play, MO

BILLY BRUCE - Stockton, MO
417-399-4800
colbbruce@gmail.com



ANNUAL FALL CONSIGNMENT AUCTION

SATURDAY AUGUST 27, 2022 @ 9:00 AM

Allen Auction Sale's Lot • 490 S. Hwy 47 • Hawk Point, MO, 63349

Directions: Allen Auction Sale's Lot. From Hawk Point, MO, Take Hwy 47 South 2.5 miles, Auction on Left Side. Watch for Signs Day of Auction.

ALL CONSIGNMENTS

COMBINE & HEADS & GRAIN CARTS

International 1460
Combine
JD Titan II Combine, 4
Wheel Drive, Nice
Motor for 7720 Combine
EZ Trail Grain Cart, 500 Plus
Bushel
JD 918 Grain Table
JD 915 Grain Table
JD 918 Grain Table
JD 693 Corn Head, Hyd
Deck Plates, 630 Contour
Shafts

TRACTORS

John Deere 4020, 1971,
Ser.# Allis Chalmers
170, Restored & All New
Rubber, Gas
1520 Ford Tractor w/
Loader, Diesel
4600 Ford Diesel, 3 PT,
Wide Front, Good
Condition
656 International Gas,
Good Rubber
Allis Chalmers, Restored
8N Ford, 3 Pt, Restored,
New Rubber
AC 185 W/ Loader, 3 PT,
Diesel
656 IH w/ 2426 Bush Hog
Loader
JD 210, 3 Pt, Good Tires
1 8N Ford, 3 Pt Hitch,
Restored
70A Case Int., 500 Hrs

FARM EQUIPMENT

16' Crumbler, Rolling
Basket for Disk
6' 3Pt Hitch Brush Hog
6 Bush Hog Blades, fit a
2615 Legend
6' 3Pt Ford Disk
International 3 Bottom Pull
Type Plow
3 Pt Attachment
300 Gallon Tank, Low Stand
w/ 110 Volt Fill Rite Pump
5' Bush Hog
7' Brush Hog, 3 Pt
NH Ford Manure Spreader,
Good Floor
3 Pt Straight Blade, 6'
3 Pt 2/16 Ford Plow
Red Brush Hog, 3Pt, 6'
Woods Twin Cadet Brush

Hog
300 Gallon Sprayer on
Trailer
JD 863 Corn Planter on
Trailer
GEHL 1165 Disk Mower,
3 Pt
650 NH 4x5 Round Baler,
Nice
357 NH Seed Wagon
Anhydrous Applicator
Old NH Header
JD 7000 Planter
1010 Kewanee Disc
3 Pt Ripper, 7 Shank
4 Row International Culti-
vator, 3 Pt
3 Pt. Disc, Ford, 6'
8 Ford Suitcase Weights
Manure Spreader, New
Holland 328, Excellent
Condition
Viking Feed & Grain Eleva-
tor, 36"
Mayrath Grain Elevator
3 Pt Bale Fork
Wagon w/ Hoist
Wagon w/ Sides
Wagon w/ Side
Wagon w/ Sides
Wagon w/ Side
216 Ford Plow
Blue Jet Sub-Tiller, 7 Shank
5' Blade
5' Brush Hog w/ PTO Shaft
5' Brush Hog w/ PTO Shaft
5' Blade
5' Blade
Hydraulic Lid w/ Pump
3 Pt 2 Bottom Pow
Small 3 Pt Cultivator
Little Crane
3 Pt Bucket
T Post Driver

SKID LOADER EQUIP- MENT

6-Open Weldable Quick
Plates
66 Rock & Brush Grapple
75 Rock & Brush Grapple
80 Rock & Brush Grapple
84 Rock & Brush Grapple
6-Closed Weldable
2 Sets of Pallet Fork
Extensions
6- Receiver Hitches
10' Brush Hog
Motor for Galion Road

HEAVY DUTY VEHICLES & VEHICLES

2002 Ford, 1 Ton Truck,
Flatbed, Title
1974 Ford Grain Truck, Title
2011 Hyundaia, Title
2001 Chevrolet 4x4, Title

TRAILERS & WAGONS

2003 Corn Pro 16' Goose-
neck Stoc Trailer, New
Tires & Wheel Bearings
96"x45' Flat Trailer
24' Titan Cattle/Stock
Trailer, Title
20' Stock Trailer, Title
Trailer, Pull Type, No Title

LIVESTOCK EQUIPMENT & SUPPLIES

2 12' Corral Panels
1 14' Corral Panel
1 16' Corral Panel
3 10' Corral Panels
8 Gate 2 Corral Panel
Metal Calf Creep Feeder
w/ Sides
Poly Calf Creep Feeder w/
Removable Sides
4 Ton Creep Feeder
Hog Creep Feeder

LUMBER

Large Lot of New Cherry,
Oak & Walnut Lum-
ber-1x6, 1x8/10, 1x-
10; Fencing, Barn Sheet-
ing & Furniture Grade
16' 4x4 Treated Lumber
Large Lot of Rough Cut
Lumber

WINDMILL

Aermotor Windmill 8' dia.
Fan, 35" tall
Windmill Well Pump

LAWN & GARDEN

Craftsman Mower, New
Blades, New Spindles &
New Battery
Kubota ZT, 72', Engine
Runs, Needs New Gear
Box
JD 345 Riding Mower
JD ZT Mower, 42"
Earthquake Rear Tine Tiller
Stihl Weedeater

Craftsman Rototiller
2 Garden Plow
Garden Tiller
Husqvana 700 Drt Garden
Tiller, Rear Tine
Leaf Blower
48" Husqvana
JD X540 Lawn Tractor
JD GX345 Lawn Tractor
Kubota G/800, Diesel
Kubota Glidesteer
Cub Cadet LTX1050 KW
Kubota ZG20 Zero Turn
Fast Track Hustler Zero Turn
Dixie Chopper 2354 Zero
Turn 54"

RECREATION

Bayou 4 Wheeler
Harley Davidson 3 Wheel
Golf Cart
1994 Ford Ranger Pickup,
Title
1964 Dodge Cornet 440,
Title
20' Seville Boat, Chevy 4.3
Liter Motor, No Title
1977 Mercury Outboard
Motor Boat w/ 1973 115
Motor, On Trailer, 3 Title
1980 Outback Boat w/
1975 Trailer, 2 Titles
2005 Loncin Popcycle
Scooter

GUNS

Ruger 22 Charger
Browning BPS Magnum
Pump
Remington SPR 310, 20 GA
Benelli M2 20GA w/ Chokes
Remington 34 22 Cal Long
Rifle, Bolt Action
Remington 552 Speedmas-
ter, 22 Cal
Winchester 190 22LR, 22
Cal w/ Scope
Remington 12 Gauge
Pump
Remington 12 Gauge
Pump
Howa Model 1500, 270 Cal
New Haven By Mossberg,
12 Gauge 3" Shell
Remington Nylon 66 22 Cal
w/ Scope, 22LR
Hercules 12 Gauge Single
Shot
Winchester Model 1300 12

Gauge, 2 3/4" & 3"
2 Single Shot Action Cow-
boy Revolvers, Like New
2 Single Shot Action
Cowboy Revolvers, New
In Box
Remington 243 Model 770
with scope and sling
Glock carbine conversion
JR 9mm Carbine with
threaded barrel
AK -47 Folding stock with
2 mags
Savage AX1.5-30-06
Remington Model 742
30-06
New England Handy Rifle
w/ 223 20 GA Barrel
High Standard 9 Shot 22 LR
Taurus Judge .45 Colt 410
SS-6 1/2
Remington 597-22
H&R Single Shot .410
H&R Single Shot 20 GA
Diamond Arms Single Shot
16 GA
Remington 11-87, 12 GA
w/ Extra Barrel
New Haven Bolt Action
20 GA
Royal Gun Works 12GA
Double Hammer
Marlin 22 Magnum

AMMO, SUPPLIES & FISHING EQUIPMENT

3 boxes 243 ammo, 100
grain
3 Boxes Winchester Shot-
gun Shells, 10 GA
2 Boxes Winchester 22
Hornet Ammo
4 Full Boxes 12 GA Premi-
um Hi-Power Shotshells
in Ducks Unlimited
Wooden Case
2 long range scopes, both
4-16x50
Scope- 3x9x40
Scope - 3x9x32
Scope - 2.5x10x40
9 - AR15 30 Round Mags
Archery Target
Tackle Boxes
Fish Scale
Antique Fishing Poles

1 LOT OF SHOP EQUIPMENT & TOOLS

PARTIAL LIST - GO TO WEBSITE FOR FULL LIST, UPDATES AND PHOTOS

Auctioneers Note: This is a partial list. We will be running 2 auction rings. Please come prepared with extra bidders. Any questions on any of the equipment, feel free to give us a call at the office or email us at office@allenauction.net. Food Stand will be provided. Thanks Nick and Kyle.

ALLEN AUCTION & REAL ESTATE SERVICE LLC
(636) 338-4805 • Hawk Point, Mo • www.allenauction.net

The Auctioneers, Nick Allen (636) 358-2900 • Kyle Allen (636) 236-2344 • Tec Parr (636) 661-5775 • Elden Foster (573) 239-6745

Lifetime Collection of Guns

PUBLIC AUCTION

10 a.m. Saturday, Aug. 27th

Location: 1585 N. Hwy. 63, Texas County Fairgrounds. **DIRECTIONS:** From Houston go north on Hwy. 63 one mile to sale. Watch for auction sign.

★ ★ ★ GUNS ★ ★ ★

Ruger (The American Farmer Edition) 10-22 Rifle, NIB • Ruger (The Cattle Drive Edition) 10-22 Rifle, NIB • Ruger M77 22-250 w/Tang Safety • Remington Woodmaster 30-06 Model 742 Carbine • Howa 1500 308 w/Boyd Stock and Vortex Scope • Colt D.A. 38 • Winchester 12 Ga. Model 1400 • Marlin 30-30, Model 30AS • Taurus PT-22 • Ruger SR22 w/laser • Marlin Model 92 w/Hex Barrel • Marlin Model 20 w/Hex Barrel • Marlin Model 39 Lever Action Hex Barrel • Marlin Model 97 Hex Barrel 22 • Marlin XT 22 • Marlin 20 ga. pump • Marlin 22 Model 80 • Remington 16 Ga. Model 1100 • Remington 410 Model 1100 w/vent rib and gold inlay • Remington 12 ga. Model 1100 • Remington 22 Model 24 • Remington 22 Auto Model 550-1 • Remington 22 Bolt Action, Model 34 • Remington 30-06 Model 7400 w/scope • Remington 16 Ga. Model 17 • Remington 22 Model 34 • Remington 22-250 Model 700 w/scope • Remington Model 12 Pump 22 w/Hex Barrel • Remington 22 Model 33 • Remington 22 Model 41 • Winchester 22 Model 90 • Winchester Model 94 • Winchester 22 Model 1890 Hex Barrel • Winchester 30 WCF Model 94 Hex Barrel • Winchester 410 Single Shot Model 41 • Winchester 22 Model 67A • Savage 22/410 Over and Under Model 24 • Savage 22 Hornet Model 23D w/scope • Savage Stevens 22 Model 87B • Savage 300 Model 99 • Savage 410 Over and Under 22 Win Mag • Savage Model 99E 300 Savage w/scope • Savage 30-30 Model 219 Single Shot • Stevens 22 Pump Model 07 • Stevens Double Barrel hammer less 16 Ga. Model 311 • Stevens Single Shot 410 • Whippet 22 Model C • HSB and C 410/44 Caliber • Stevens 410 Model 37 • Springfield 22 Model 53A • Witte Hardware CO 12 Ga. SS • Iver Johnson Arms and Cycle 410 SS • Riverside 12 ga. SS • Stevens 410 SS • Stevens Crack Shot 22 Model 26 • Springfield 22 Model 83 • Iver Johnson 410 SS • Colt Lightning 22 Hex Barrel 1883 – NICE • Iver Johnson 410 Single Shot (2) • Iver Johnson Arms and Cycle Co 3 inch • 10 Ga. H Piper Double Barrel w/Hammers • JC Higgins 410 Model 1011 • Western Field 16 Ga. Pump Model 35 • Springfield Arms 22 Bolt Action • Excel 410 Single Shot • Hopkins Allen Double Barrel 16 Ga. w/Hammers • Premier 22 Pump Hex Barrel • Mossberg 410 Bolt Model 183 KC, three inch • Hopkins Allen 12 Ga. • Lefever Double Barrel 16 Ga. hammerless • Lefever Double Barrel 12 ga. Hammerless • 1894 Mauser 2615 • Misc ammo • Turkey Calls and Knives •

★ TRUCKS ★ TRAILERS ★ UTV ★



2002 F-350 Crew cab 4 x 4 7.3 diesel 6 speed w/ DEWEZE bale bed • 2016 Polaris Ranger, diesel • 2020 14-ft. Dove tail trailer • 2017 Kawasaki Mule 157 hours • 2018 Stag Trailer w/tilt and heavy axles • MEB 5 X 10 Utility trailer • 6½ x 12 Dump utility trailer • Honda 300 4 Trax 4 wheeler • 2017 John Deere X330 mower • Delta miter saw • 18-Volt Makita drill • Champion dual-fuel generator 9375 starting watts • Hitachi air compressor w/nail gun • Garden tiller • Scroll saw • Floor jack • Small torch set • Animal trap • Electric fence chargers • ATV sprayers • Gas cans • Weed eaters • 10 rolls of 12 2 Romex electric wire • Six-ft. 3 Point Bushhog • Miscellaneous not listed •



•

★ ★ COINS ★ SEWING MACHINES ★ ★

100 Walking Liberty Half Dollars • Two Featherweight Sewing Machines Serial 1938 and 1948 •

To see all pictures, go to www.auctionzip.com....auctioneer number 22112. Thank you for your patience as we are still working on this website. Or go to facebook at Darren Scheets Auction Service.

Auctioneer's note: Don't miss this lifetime gun collection along with some nice UTV's and trailers. May have a few guns that are not on listing. Make sure you are on time as we don't have many small items to sell. Thanks, Darren and Jake

TERMS OF AUCTION: Cash or check with picture ID. Nothing loaded or removed until paid for. Everything sells as is, where is. Not responsible for accidents, lost or stolen items. Auction day announcements take precedence over all previous advertisements. **LUNCH ON GROUNDS.**

Darren SCHEETS

AUCTIONS

(417) 457-6638 • (417) 926-8575
www.scheetsauctions.net



1000 Sell!!

At The Ranch

FALL SALE

SEPTEMBER 3RD, 2022 - 12 NOON - A BAR RANCH - CLAREMORE, OK

BRED HEIFERS



A Bar Ranch heifers are a product of 35 years of ranching. Selected for efficiency in multiple fields of performance and highlighted in traits to boost fertility and longevity. This year's class of A Bar heifers were all bred to Express Sons of: Exar Monument, HA Cowboy Up, Ezar Gold Rush, Exar Stud, Exar Expo

- 200- Angus heifers sorted into 30-day calving periods to start 2-1-23
- 120- Ultra-black heifers sorted into 30-day calving periods to start 2-1-23
- 40- Black Baldy heifers sorted into 30-day calving periods to start 2-1-23



7S

7S Stuart Ranch heifers are a unique opportunity to own females from one of the most historic ranching operations in Oklahoma. 7S Ranch has been selecting for generations, focusing on fertility and maternal traits, while maintaining a moderate framed and efficient female meeting their rigorous performance standards. Bred by 4-star calving ease Express Ranch and Schilling Ranch Angus Bulls.

- 84- Angus heifers sorted into 30-day calving periods to start 2-1-23
- 110- Black Baldie heifers sorted into 30-day calving periods to start 2-1-23
- 75- Red and Red Baldie heifers sorted into 30-day calving periods to start 2-1-23

BRED COWS

- 42- Angus pairs 3 to 5 years old with Angus sired calves at side.
- 80- Northern Angus Fall calving cows 3 and 4 year olds bred to sons of Connealy Consensus. Start calving 9-1-22.
- 120- Angus Fall calving cows 3 to 4 year olds bred to Angus and Charolais bulls. Start calving 9-15-22
- 60- Angus Fall calving cows 5 year olds bred to Angus and Charolais bulls. Start calving 9-15-22
- 40- Red Angus Fall calving cows 3 to 5 year olds bred to Angus bulls. Start calving 9-15-22
- 120- Brangus Fall calving cows 3 to 5 year olds bred to Angus and Charolais bulls. Start calving 9-15-22.
- 43- Angus Spring calving 3 to 5 year old cows bred to Hinkson and Schilling Ranch Bulls to start calving 2-10-23.
- 45- Brangus Spring calving 3 to 5 year old cows bred to Hinkson and Schilling Ranch Bulls to start calving 2-10-23.



For Cattle Information

Armitage Family
P.O. Box 1396 Claremore, OK 74018
Email: martha@abarranch.com

Sale broadcast by... Live Auctions TV

For pictures, videos, or information
give us a call!

www.abarranch.com



MERRIT 918.607.6808

TURNER 918.697.6717

OFFICE 918.342.2225

LIVING ESTATE AUCTION

878 NE 990 RD WINDSOR, MO

As we are selling our home and going full-time RVing, we will sell the following at auction located from Windsor on Hwy 52 west 3 miles (or from Calhoun on Hwy 52 east 3 miles) to 990 Road, then 4/10ths mile on 990 to first driveway on left on

SAT. SEPT 3RD, STARTING AT 9 AM

CAMPING TRAILER 2017 33.5' Cherokee 274 RK (rear kitchen) camping trailer, 12' Slide-out, front awning, sleeps 4+, private queen quarters, double door bathroom, int. & ext tv hook-ups, recliner, spacious kitchen counter space, mostly vinyl floor, very nice! **TRACTOR** 2002 New Holland TL80, 80hp, 1080 hrs, Cab/Air, w/NH 7210 loader modified for skid steer attachment **ATV** Honda Foreman 400 4-wheeler **TRAILERS** 16' Tandem axle flatbed trailer, 2' dovetail, w/removable stock racks * Coose 16' Stock trailer **STORAGE SHEDS** 8x14' portable shed, insulated & wired * 9x12' Rural America mini barn * 8x20' Metal storage box w/marine plywood floor **FARM EQUIPMENT** Hesston 5500 big round baler, twine tied * Viking CM247 disk mower * IHC 10' rake Perfect HR400 Tree Saw for Skid steer, cutters recently redone * Keen Kutter 3 pt 6' Tandem disk * Danuser post hole digger, 12" auger * 68" tractor bucket w/tooth bar * 60" Grapple bucket * Quick Tach bale spear * Rear tractor bale spear * Hyd. Post driver modified for skid steer * Skid steer t-post puller attachment * Rhino 15' batwing brush cutter, rough cond. **AUTOMOTIVE** Champion 11,000# 2 post auto lift * Cherry picker engine hoist * Aluminum ATV racks * Engine stand * Portable 20 gal Waste oil drain tank **INDUSTRIAL & BUILDING** Upright SL20 Scissor lift * 4-8' Pallet racks * 6' Roll-around scaffolding * Advance Aqua Clean Commercial carpet cleaner * New 32" steel entry door * Down-Draft Roof 8" Media Evaporative cooler * Lot oak planed wood, Sev. 3' oak spindles, Lot oak trim, misc. used lumber * Few rolls A-19 insulation * Stainless steel 3 vat free-standing sink * Vessel sink 240 sq ft New Commercial carpet squares **SHOP EQUIPMENT & TOOLS** Kobalt 80 gal compressor * Dewalt chop saw on cabinet * Skat Blast Sand blast cabinet w/accessories * Grizzly 34" Floor model Radial 1/2" Drill Press * 100# Sand blaster * Protech Contractors saw w/stand * Blackhawk mig welder * Miller 200LE welder * Stihl TS400 Concrete saw * Black Max 8450 generator * Delta 15 amp 13" portable planer * Bostitch wire weld framing nailer * Ridgid worm drive saw * Porter Cable saw * Air hose reels * 2000 psi pressure washer * Florcraft 5" flooring saw * Tile saw on stand, Tile tools, trowels, etc * Porter Cable 20v tool set w/grinder, Sawzall, etc * Craftsman double wheel grinder on stand * Welding helmets and shields * Small Waterloo 6 drawer tool cabinet * Graco Magnum X7 airless paint sprayer * Paint spray guns, tarps, painting supplies * Co2 welding cylinder * 44" Shop fan * Large 2 drawer filing cabinet * 5 pc Pipe threading kit * Solvent cleaner tank * Tradesman 170 propane shop heater * Crown 18 ga. Stapler * Drill vice, jack stand, Chain breaker, Pipe clamps, Floor jack, Bar clamps, levels, saws, various drill bits Lumber roller **LIVESTOCK EQUIPMENT & VET SUPPLIES** Livestock squeeze chute, palp cage, head gate * Mirafount double livestock water tank * Hay bale ring w/hay saver cone * Rubbermaid water tank * 2-10' Bunk feeders * Floating tank heater * Cattle tags, calf chains, Ralgro gun, Burdizzo clamp, calf bottles, bucket calf feeder, etc **HAY** 10-2021 5x5 Net wrapped mixed grass hay 6-2022 5x5 Twine tied mixed grass hay **FARM & GARDEN ITEMS** 25 gal ATV sprayer * 55 gal Sprayer w/8" spray bar * AgriFab 910# lawn roller * Craftsman front tire tiller * Echo SRM210 weed trimmer * Stihl 025 chainsaw in case * Husqvarna 45 chainsaw * New PTO shaft * Gate jacks (for setting gates) * 14' Red metal tube gate * Yard utility wagons * Metal double pole hitching post 10' x 8' * 24' Sign post * 14' Street lamp pole (Windsor) * 20 gal propane tank * Lot used steel fence posts, 2 Solar fence chargers, fence stretchers, other fencing tools * 6" baler belt lacer * Milk house heaters * Log chains, center links, farm and garden tools, etc. * Mud tires for Honda ATV, trailer tires, etc. **HOUSEHOLD & ANTIQUES** Antique primitive flip-top desk * Old treadle sewing machine * New Showtime rotisserie oven * GE apartment refrigerator * Small antique pie safe cabinet * Kitchenaid coffee mill, other small kitchen appliances * FireKing items, "Family" measuring cup, pyrex, other collectibles * White wicker glass top table, love seat, chair * Lot misc household goods, dishes, cookware, etc * Porch swing chairs, hammock * 100 Window AC unit **CAMPING & RECREATIONAL** 4' Square Deer blind * 3 Metal deer stands * Camping tents * Fishing rods and reels * Camping chairs * 6' Folding table * Camp stove * Target spinners * Hunting accessories * Several coolers, various sizes * Pacific 20 ga shell reloader Many other items too numerous to mention



Tim and Kelly Horner

For pictures, check out the website www.DrenonAuction.com

Note: This is a large sale with something for everyone. We will be running two rings, so bring a friend and plan to enjoy the day!

Larry DRENON AUCTION

Larry Laramie
660-596-8515 660-221-4386
Lacey Cooper
660-723-1104 660-723-2221

Office: 660-723-6188
www.DrenonAuction.com

Terms: Cash, Approved check, credit/debit card (convenience fee applied to card purchases). Nothing to be removed until settled for. Not responsible for accidents, should any occur. Statements made day of sale take precedence over any media advertisements Lunch served.



SOUTHWEST AUCTION SERVICE
Fall Equipment Consignment Auction!
 Office: 417-652-7540 Website: www.swaauction.com
DATE OF AUCTION: Sunday August 28th 2022
Starting Time: 9:00 AM Rain or Shine!
Location: 151 State Hwy 76 Rocky Comfort MO 64861



AUCTIONEER'S STATEMENT:

We hope everyone can join us for our annual Farm Equipment Consignment Auction. Historically August has been cooling off to more enjoyable temperatures by the end of the month so we expect great weather. We will have a large offering of Tools, Farm Equipment, Guns and much more. We are welcoming all consignments NOW and asking that everything arrive no later than Saturday prior to the auction. No consignments morning of the auction please. Looking forward to another great auction. Thank you from- Southwest Auction Family

DIRECTIONS TO AUCTION:

FROM WHEATON, MO: Take Hwy 86 one mile South to Hwy 76, turn West, go 1/4 mile to sale on south side of road. Look for 3 brown barns.

FROM CASSVILLE, MO: Take Hwy 86/76 West 14 miles, stay West on Hwy 76, go 1/2 mile to sale on south side.

FROM ANDERSON, MO: Take Hwy 76 East approx. 25 to 30 miles to Rocky Comfort, Mo. Go 3 miles on Hwy 76 to sale on south side of road. Watch for signs!

FROM MONETT, MO: Take Hwy 37 South, go 10 miles to Purdy, Mo. Turn West on Hwy B, go 10 miles to hwy 86, turn South. Go 4 miles to Wheaton-follow Wheaton directions.

FROM NEOSHO, MO: Take Hwy 60 North/East 4 miles to Hwy 86. Turn East, go 25 miles to Wheaton.



Outdoor and Recreational:

Wood Table, Grill, Cub Cadet Mower, Chain Saw, Hawk Motorcycle, Bicycles, Leaf Blower, Lawn Seeder, Coolers, Gas Cans, Exmark Zeroturn

Farm Machinery:

3pt. Bale Unroller, Grainavator Wagon, Used and New Steel Post/Wire, Gates and Panels, Priefert Cattle Head Gate New, Farm Pro Model 2425 4WD Y385 Tractor w/ Front End Loader & Scraper, Manure Spreader

Household and Misc.:

Hardwood Flooring 40sq ft New in box, Reclining Couch, Electric Lift Chair, Bed Frames, Box Springs, Large Rug, Side Table, Coffee Table, Clock, Small Rug, Pillow, Washer Hoses, Dryer Hose, Toilets, Pots and Pans, Toasters, Office Supplies, Furniture, Filing Cabinets, Shelving, TV's, Flate Screens, Printers, Copiers, Aquarium, Wacker Neuson Trash Pump, Tables and Chairs, Piano, Carts, Lighting Supplies, Mop Buckets, Large Aviary Cages, Reptile, Display Cages, BBQ Grill Master

Trucks, Trailers and Vehicles:

2013 Blue GMC W/150K Miles, Black 2500 Duramax W/260K, Heavy Duty Headache Rack/Bed Rail, Side Steps for Tuck, Expedition 2011 700,016 Miles Dual Axle, 1966 Ford F-250 Camper Special

Tools and Shop Items:

Clark 3-Stage Forklift, Porter Caber Tool Sets, Bosch Tool Sets, Portable Vacuum, Tool Bags, Hammer Holder, Flood Light New in box, Kitchen Cabinet Lights, Extension Cord, Batteries and Chargers, Rail Road Search Light, Air Compressor, Hammer Loops, High Lift Jack, Sprayers, 8Hole 1Ton Wheels and Tires, 3-Hole Planter, Metal Cart Generator, Scale, Welder, Trash Cans, Water Dispenser, Air Tanks, Semi Fridge, Hand Sanitizers, True Temp Stove, Totes, Signs, Generator, Fire Ext., Semi Truck Parts, Water Tanks, Paint

Terms of the Auction: We accept Cash, Good Checks w/ proper ID & Credit Card (5% Convenience Fee) We are not responsible for accidents to man, woman, child or animal. We are not responsible for lost, stolen, or damaged articles or property! All accounts must be settled prior to removal of auction item! Statements made day of auction take precedence over all printed materials! For more pictures visit our website at

Bob Hughes
417-652-7540



www.swaauction.com

417.652.7540

PUBLIC AUCTION

SATURDAY, AUG. 27 @ 9:00 A.M.

Directions: SALEM, MO - 300 E. Franklin. Coopers Auction, just behind Phil-Mart. Watch for signs.

AUTO • HOUSEHOLD • FURNITURE • COLLECTIBLES • GUNS • MISC. ITEMS

Pontiac Bonneville, 4-Door, Runs - Water Fountain - Yard Ornaments - Hose & Reel - Brass Items - Weber BBQ Grill - 6' Step Ladder - Lamps - Cutco Cutlery - 14' Aluminum Ext. Ladder - Coolers - Yard Tools - Jumper Cables - Electric Cords - Tarps - Lawn Chairs - Luggage - Old Rugs - Hivac 4.0 20" Push Mower - Huffy Bicycle - Suit Steamer - Golf Clubs - Christmas Items - Old Christmas Train - Hand Tools - Old Fishing Items - Trouble Light - Old KitchenAid - Lenox - Henry Link Dresser, Desk, & Bedroom - Stock Pots - Wreaths - Bakers Racks - Old Planer - 29 Pc. Corningware - Wooden Table w/Folding Leafs & 4 - Chairs - Old Washboard, Wood - GE Washer & Electric Dryer - Cleaning Supplies - Ironing Board - Panasonic Microwave - Pots, Pans & Utensils - Disney Glasses - 20 Pc. Setting, Franciscan - Wicker Trunk & Chest of Drawers - Kitchen Table w/7 Chairs & A Bench, - Tell City - Old Oil Lamp - Juicers - Table Runners - Grandfather Clock - Table Lamps - Old Wingback Chairs - End Tables - Neat Old Sofa - Organ - Vases - Kimball Piano - Rocking Chair - Brass Duck - Roll-top Desk - Office Chairs - Floor

Lamps - Knick-Knacks - Plant Stands - Oreck Vacuum - Rainbow Vac - #9 Griswold Dutch Oven - Pleather Love Seats - Coffee Table - Books - Oak Desk - Computer & Acc. - Entertainment Center - 2 Original Bowie Knives - Samsung Flat Screen TV - Iron Door Stop - King Size Bed - David Plank Drawings - Pictures - Cameras & Accessories - Shoe Rack - 45 Colt Ammo - 2, Henry Link Hutches & 2, 3-Drawer - Chests - 2 Corner Shelves - Quilt Rack - Sailing Ship - Brass Owl - Ceramic Figurines - Brand New Sony Walkman CD Player - Nice Old 4-Drawer Dresser - Jewelry Boxes - Cedar Chest - Sitting Chair & Ottoman - PVC Patio Set - Retro Table & 6 Chairs - Park Bench - Gas Grill w/ New Tank - Wren Houses - Dent County Medallion Set - Ozark Heritage Books - Mondial Mod 1900 Cal. 22 - Taurus 357 Magnum & Box - Topper Model 158 H&R 20 Gauge - Avalon Guitar, Very Nice - Vol. 1, 2 & 3 Ozark Heritage - Voices of Bunker - History & Genealogy - W. P. Elmer's History of Dent County - Crawford County Vol. 1 History Book - Colt 38 Special Police - High Standard 22 Cal. Pistol - S&W Air Weight 38 Special



ESTATE OF: RUTH WISDOM

AUCTIONEER'S NOTE: Very, very clean.
Lot of items not listed.

See you there! - Tom!

ANNOUNCEMENTS AT AUCTION TAKE PRECEDENCE OVER PRINTED MATTER

WULFF AUCTION

TERMS: CASH OR
APPROVED CHECK -
I.D. REQUIRED
NOTHING REMOVED
UNTIL SETTLED FOR

LICENSED
APPRAISALS

2334 Highway K, Salem, MO 65560
AUCTIONEERS: Col. Tom Wulff • John Wisdom
Cell: 573-247-3884 • Cell: 573-247-9563

Clerk: Tracy Strange Home: 573-729-8476 Cashier: Nancy Inman
See Wulff Auctions at www.thesalemnews.com/auctions



RAIN OR SHINE
OWNER & AUCTION
PERSONNEL NOT
RESPONSIBLE FOR
ACCIDENTS AT SALE SITE

ESTATE AUCTION

Friday, August 26th, 2022 ~ 9:00 AM

LOCATION: 12542 East Osage Nation Road, Nevada, MO; Directions: From Nevada Go West On 54 Hwy 1 Mile To 1275 Rd Then South To Birch Tree Or Olive Pass Then Right Continue South Through Curves To Sale Site. GPS Will Get You There (Watch For Signs)

Auction For Doris Weatherly McNair Estate



Antique, Modern Furniture & Exercise Equipment

Rare Ant Oak Double Side Library Table, Ant Round Side Ornate Secretary/China Cabinet, Ant Walnut Ornate Marble Top Dresser W/Mirror, Ant Oak Wash Stand, Ant Pie Safe/Jelly Cabinet, Ant Vanity Dresser W/Lg Carved Mirror, Ant Buffet, Ant China Cabinet, Ant Oak Store Cabinet, Ant Pump Organ, 2 Ant Oak Rockers, Ant Oak Library Table, Ant Wicker Rocker & Other Wicker Pcs, Ant Hope Chest, Ant Shelf, Ant Chest Of Drawers & Dresser, Ant Oak Round Kitchen Table, Ant Kitchen Chairs, Ant Trunks, Ant Child's Rocker, Ant Baby Bed, Ant School Desk, Several Sm Ant Tables, Ant Ornate Sitting Chairs, Prim Wood Student Desk, Prim Library Shelf, Prim Coffee & End Tables, Ornate Wood End Tables, Oak Round Front Curio Cabinet, Oak Dresser W/Mirror, Oak Queen Bed, 2 Oak Quilt Chest Boxes, Oak Long Bench, Sm Oak Round Table, 2 Oak Plant Stands, Oak Quilt Racks, Prim Wood & Metal Cabinets, Chest Of Drawers, Maple Dresser W/Mirror, Barstools, Neat Flip Top Sofa Table W/Drawer, Wood Wardrobe, Old Pictures & Paintings, Cubby Hole Wood Stand, Ornate Lamps, Brown & Red Leather Dual Recliners & Dual Couch Recliner, 2 King Size Beds, Recliners, Sectional Couch, Fireplace Heater Insert W/Mantle, Office Desks,

Everett Piano, Technics Electric Organ, Lg Flat Screen TV, High End Nordic Track Exercise Bike W/Screen, Treadmill, Other Items Not Listed

Antiques, Collectibles, & Households

Crock Pcs Inc #8 Western, Glass Butter Churn, Old Oil Lamps, Galvanized & Granite Ware Pcs, Old Jars, Old Pottery, Unusual World Globe On Stand, Old Dolls, Ant Ladies Bust On Stand, Old Linens, Old Jewelry, Old Cookbooks, Old Baskets, Strawberry Collectible Pcs, Rooster & Chicken Collectibles, Ant China Set, Old Ice Cream Maker, Angel Collection, Very Lg Lot Of Collectible Knick Knack Of Various Kinds, Fenton Glass, Milk Glass, Lg Lot Of Ant Glassware Inc Pink, Green, Amber, Blue, Red & Also Cut & Pressed Crystal, Lg Lot Of Christmas Décor Some Old, Also Several Sizes Of Christmas Trees, Corning Ware Dishes, Sm Kitchen Appliances, Pots, Pans & Dishes Most Like New, Other Items Not Listed

Roll Around Toolbox, Tools & Outdoor

Related Items

Roll Around Toolbox, Roll Around Garden Cart, Wheelbarrow, Shop Vac, Sm Air Compressor, Sm Electric Tools, Sm Hand Tools, Long Handle Tools, Dolly, Garden Tools, Shop Shelving, Live Trap, Basketball Goal, Fishing Poles, Concrete Yard Décor, Patio Furniture, Pet Taxi, Dog House, Cat Stand, Other Items Not Listed



Auctioneers Note: This Is A Very Clean & Outstanding Auction. Some Of The Best Antique & Modern Furniture We Have Had The Privilege To Sell All Year. I Can't Stress Enough How Clean This Auction Is. If You Are Looking For Top Of The Line Items You Do Not Want To Miss. Very Excellent Line Of Outstanding Antiques & Very Excellent Glassware Some Of The Best Of The Best. Tools & Outdoor Are Excellent As Well. Please Plan Now To Attend. **Sale Order:** Antique & Modern Furniture Will Sell First Followed By Antiques, Collectibles & Households. Tools & Outdoor Items Will Finish Auction. See Ya There!!!

Terms: Cash or check with proper ID. Now accepting most major credit cards. Nothing removed until settled for. Statements made the day of sale takes precedence over printed material. Everything sold as is where is. Not responsible for accidents. Restroom available. Concessions Provided. Check our website for upcoming auctions and for additional pictures!!



NANCE AUCTION SERVICE

No Matter How BIG or small, We Do Them All!!!



Col. Bill Nance 417-214-0093 In God We Trust Philippians 4:13 Sean Beazley 417-247-6754

GO TO THE AUCTION • GO TO THE AUCTION • GO TO THE AUCTION • GO TO THE AUCTION • GO TO THE AUCTION •

PUBLIC AUCTION

SATURDAY, AUGUST 27, 2022

STARTING AT 9:00 A.M.

LOCATION: 11200 COUNTY ROAD 9050, DIXON, MO 65459

DIRECTIONS: FROM HWY 28 NORTH OF DIXON, TURN ON MM HWY AND FOLLOW TO THE END OF THE BLACKTOP. CONTINUE 1/2 MILE ON THE GRAVE TO THE FARM.



Home & Furnishings

Sharp 46" Flat Screen TV
• Pool Table • Lift Chair
w/Heat & Massage • Lazy
Boy Recliner • AmCrest
Security System • Oak
Dining Room Table w/6
chairs • Lot Tupperware
• Ninja Food Processor •
Bedding, Linens, Towels •
Dyson Cyclone Vacuum •
Honeywell Dehumidifier
• Dell Computer, Monitor
& Printer • Oak Dressers
• Single Pedestal Desk
• Shower Chair • Plastic
Totes & Lids • Elec.
Turkey Fryer • Speed
Queen Washer • Maytag
Dryer • Whirlpool Elec.
Stove • Eden Pure
Heaters

Antiques & Collectibles

• Lionel 1937
Locomotive • model
700E • Cast Iron Horses
& Wagon • 2 qt. Dazey
Butter Churn • Cast Iron
Door Holders • Milk
Glass Aladdin Lamp •

Amber Glass Pitcher •
Mont.Ward Coal Ridge
Stove, Model 81558-75X
• G.E. Wringer Washer
• Old Tinker Toys •
Building Blocks • Ludwig,
New York • Upright
Piano • Lot Crock Bowls,
var. sizes • 22" & 24" Cast
Iron Kettles • 3,5,6, & 10
gal Crocks • 15" Lodge
Cast Iron Skillet • Kraut
Cutters, • Sinclair Apple
Peeler • FireKing Jadeite
cups, plates, & bowls •
Glass Minnow Trap • 40"
Oval Galv. Tub

Shop & Outdoor

20X25 Metal Carport
(buyer has one week to
remove) • 8' Box Blade
• 7' Bush Hog Bucket •
Bush Hog Rotary Cutter
#3108 (pull type, dual
rear wheels) • Lincoln
Welder, Kohler Motor
• Engine Hoist • Dual
Wheel Caddy • Fuel Tank
w/Pump • ATV Sprayer
• Lot of Machinist's

Micrometers and
Calipers • Aluminum
Ladder • Concrete Feed
Bunk • Gates and Panels
• Corn Grinder & Bin •
110 gal. Tank & Pump •
My-D-Hand-D Squeeze
Chute • Feed Troughs
• Livestock Racks •
Garmin GPS • 225 AMP
Stick Welder • DeWalt
Hammer Drill • Bench
Grinder • Lot Elec. Hand
Tools • Metal Chop Saw
& Blades • Dual Tank
Air Compressor • Lot
Hand Tools • Iron Man
5" Vise • Rock Island 4"
Vise • Jet Horizontal/
Vertical Band Saw •
Hydra Flow Parts Washer
• Oversize Wrenches •
Craftsman 3/4" Drive
Socket Set • Craftsman
60 Gal. upright 5hp Air
Compressor • Craftsman
Floor Drill Press •
Craftsman Radial Arm
Saw • Battery Charger
• American Mobile Air

Tank Blaster • Daytona
3T Floor Jack • Shop Vac
• 12-2 Elec. Wire • Digital
Micrometers & Calipers
• Chain Drive Hoists •
Ratchet Binders • Log
Chain • Gun Cleaning
Kits • Pneumatic Tools •
24" Adjustable Wrench
• Lot Scrap Iron • Bale
Spears • Fork Lift
Attachments • Race
Model GF1207 Grapple
Bucket • 5 Tiers Rolling
Shelves • Stacking Chairs
on rolling platform •
Tractors, Trailers etc.
1755 Oliver Tractor, Cab,
Over/Under, 3226 Bush
Hog QT Loader, Cast
Iron Grill, Good Rubber,
shows 550 hours (diesel)
• 1850 Oliver Tractor,
cab, over/under, 6450
Bush Hog Loader, Good
Rubber, shows 2703
hrs, (gas) • New Holland
488 Haybine • Sperry-
New Holland Model
851 Chain Type Round

Baler • IH Square Baler •
Homemade Goose Neck
Trailer, Tandem duals,
19'6" bed plus 5'dovetail,
attached ramps • Farmall
Super C Tractor w/3pt
• Montgomery Ward
3 pt. Post Hole Digger
• Shave Post Hole
Pounder, Hydraulic •
3 pt. Wood Splitter •
3 pt. Sickle Mower •
Rear Attach Seeder/
Spreader • Cultivator •
Two Bottom Plow • 8'
Disc • Euro Rake, 8 wheel
Rake • 8' Dirt Blade, Tilt &
Swivel • 21' Stock Trailer,
Good Fabric Top, Good
Rubber, Gooseneck,
Good Floor

**Lunch available by
Cindy's Lunch Bucket**

**Many more items too
numerous to mention.**

**We will be running 2
rings throughout
the day.**

Owner: Jerry Bacon Estate

Sale Conducted by

WARDEN AUCTION & MORE

(573) 528-0729



Ed Warden – Licensed Auctioneer/Real Estate Broker

www.wardenauction.com



TERMS
Cash, Credit,
Debit or Approved
Check

ID Required for
Bid Number

TERMS
Not Responsible
For Accidents
or Losses

Nothing Removed
Until Settled For

GO TO THE AUCTION • GO TO THE AUCTION • GO TO THE AUCTION • GO TO THE AUCTION • GO TO THE AUCTION •

Wheeler Livestock Auction, Inc.

Special Stock Cow Sale

Osceola, MO



SATURDAY, AUGUST 27, 2022 • 6:00 P.M.

Expecting 800 head of Bred Cows & Cow/Calf Pairs

Hamby-

- 1 Char bull 18mo.

A-Team Angus-

- 5 Reg Ang bulls, 18mo-3 y/o, 2 of these are CE bulls.

Blue Farm-

- 40 Fancy Ang Cows 4-6 y/o, 1,300lbs, bred 2nd & 3rd to Ang or Hereford bull. Good gentle calf raisers.

Reynolds Farm-

- 40 Fancy Ang cows 4-6 y/o, 1,300lbs, w/13 BWF clvs. Rest 3rd bred to Hereford. Calving daily, good cows, had all shots.

Denman Ranch-

- 25 good Blk Ang cows 3-4 y/o, 1,150lbs, 3rd period bred to Ang bull, to calve Sept 1st. 20 good Blk Cows 3-5 y/o, 1,100lbs, 2nd period, bred to Ang bull.

Peyton Farm-

- 41 Fancy Blk cows 3 y/o, 1,150lbs, bred 3rd to good Ang bulls, to calve Sept 1st. All hfrs raised a calf and bred back w/ 2nd calf. Good set of young cows.

Strickland Complete Dispersal-

- 100 Ang cows 3-6 y/o, bred 3rd to Ang & SimAng Bulls. 25 Red & Yellow X cows 3-6 y/o, 1,100 lbs, w/ 25 clvs, 250lbs. 28 red & yellow X cows 3-6 y/o, 1,150lbs, bred 3rd to Ang & SimAng bull. The above 153 cows are all gentle, good calf raisers w/ complete health and mineral program.

Kazman farm dispersal of fall calvers-

- 55 Fancy Blk & BWF 3-6 y/o, 1,300lbs, start calving Aug 15th, bred to Blk SimAng bull. 30 Fancy Red Ang & Red Ang CharX cows, 3-6 y/o, 1,300lbs, bred to SimAng bull. The above 85 cows are true fall calvers will be some calves by sale day.

Creed Farm-

- 8 yellow CharX hfrs 2 y/o, 1,050lbs, w/8 calves, 450lbs. 12 Mix cows 5-7 y/o, 1,150lbs, w/12 clvs, 450lbs. The above 20 pair all worked and bred back to Flying H SimAng Bull. 11 Blk Ang cows 4-6 y/o, 1,200lbs, bred 3rd to Range Fire bulls, calve Aug 15th. 1 Yellow Range Fire bull 2 ½ y/o, 1,500lbs.

Matlock Farm-

- 10 Fancy Ang hfr 2 y/o, 1,200lbs, calve Sept 1st for 60 days. Bred to CE Ang bull. 15 Fancy Ang Cows 3-5 y/o, 1,200lbs, to calve Sept 1st for 60 days. 15 Ang cows 3-5 y/o, w/15 Ang clvs, 300lbs. Cows bred back to Blk bulls.

L&K Farm-

- 17 Ang hfr 2 y/o, 1,050lbs, w/ clvs, 350lbs. Hfrs bred back to Ang bull. Good gentle hfrs.

Lee Farms-

- 50 Blk cows 3-4 y/o, 1,150lbs, bred 3rd to Wilmoth Ang bulls. Cows to start calving Sept 1st. Very nice set of young cows bred to outstanding bulls.

Duvall Farm-

- 45 Fancy red Ang cows 3-4 y/o, 1,200lbs. Cows bred 3rd to red balancer bull. The above 45 cows have 15 clvs now, more by sale day.

Loyd Stockton-

- 20 Red & Blk hfrs 2 y/o, bred 3rd to red Ang bull, to calve Sept 10th. Nice hfrs Pharo Genetics. 10 red & Blks cows 3-5y/o, bred 3rd, to calve Sept 10th.

D&D Farm- Dispersal of fall calvers-

- 40 good Ang cows 3-5 y/o, 1,200lbs, bred 3rd to SimAng bulls. There are 5 clvs now with more by sale day.

Diamond M Land & Livestock-

- 20 Blk Balancer cows 4-7 y/o, 1,150lbs, bred to blk balancer bull to calve Sept 1st. Complete health program, good calf raisers.

Mike Sawyer-

- 66 Blk cows 6 y/o-SS, 1,300lbs, bred 3rd to reg Ang bull, to calve Sept 1st for 75 days. 10 Blk cows 5-7 y/o, 1,300lbs w/10 Ang clvs, 400lbs. Cows bred back. 1 Reg Ang bull 3 y/o. 1 Reg Ang bull 5 y/o. Good calf raisers, complete health program, selling due to drought.

ATTENTION CATTLEMEN:

Many Cows selling due to the dry summer. We have got rain but many cattlemen short on hay and pasture, a lot of good high quality cattle.

SEPTEMBER STOCK COW SALE • SEPTEMBER 24TH

Wheeler Livestock Auction, Inc.

Osceola, MO 685 SE 13 Hwy., PO Box 560 BARN 417-646-8102

Byron Wheeler-417-777-0897 • Les Tennis-417-466-8786

Red Whistance 417-276-7909 • Burleigh Wheeler-417-840-6561

Darwin Hearting-417-296-1029 • Kevin Wade-660-492-3279

Tim Sherrer 573-855-1951

Office Manager: Weston Shelby, 417-298-1316

Bid online on CattleUSA www.wheelerlivestock.com

Like us on Facebook-Wheeler Livestock Auction



Sam CRAWFORD AUCTION SERVICE LLC

Will sell the following 5 miles North of Cross Timbers, MO on Hwy. 65.
Watch for auction signs.

MONDAY, SEPTEMBER 5TH, 2022 - 9:30 AM

GUNS - COINS - TRACTORS - MACHINERY - VEHICLES - TOOLS - MISC.



COINS - SELL AT 9:30

1873 Shield Nickel
1943 S Mercury Dime
Other Mercury Dimes
1829-29-33 Bust Half Dollar
2013-14-21 Silver Eagle
1959 Proof Set
1975-79-03-04-06-08 Proof Sets
1878-90-91 CC Silver Dollar
1897 S Silver Dollar
Other Silver Dollars
1880 & 81 5 Dollar Gold

GUNS - SELL AT 9:30

Hi Point C9 9mm NIB
Remington 750 Woodmaster 308 w/Scope
Remington 552 Speedmaster 22 w/Red Dot Scope
Stevens 311D 20 Ga. Double Barrel
Ruger 77 .50 Cal. w/Scope
Springfield Hawken 50 Cal
Ruger 10/22 .22 Stainless
LC Smith 12 Ga. Double Barrel
Anderson AR-15 223 w/Extras
Winchester 1300 12 Ga. Pump, NIB
Marlin 17 HMR
Remington .243, Mod 783
J.C. Higgins 20 Ga. Bolt
Marlin .22 Auto
Military .22 Bolt, Training Rifle
Bay State 16 Ga. Single
Rossi 44/40, Lever
Heritage Arms Single 6, Mags for .22 and .22 Mag
North American .22 Short, Derringer Style
Taurus "The Judge" Stainless, 6", Grip Laser
Smith & Wesson 9mm Auto
Smith & Wesson 38 Sp. L & P, Bodyguards, Insight Laser
Smith & Wesson 357, Model 586-1
Colt 25 Cal., Auto
HY Hunter 22 Derringer
North American Arms 22 mag., 5 Shot Derringer
Jennings 22 5 Shot Auto
Daisy Eagle BB Gun, Blonde Plastic Stock

2 - Crosman CO2 BB Pistols
Remington Woodmaster 742 - 30-06
Winchester 3030 Mod. 94
Sears 30-30, Mod. 54
Ruger 10-22
30 Cal. Carbine
Remington 32 Pump
Remington 35 Pump
Savage 22 Pump
Mossburg 22 Auto
Winchester 22 Singleshot
Japanese Mauser 7.8
Dietro Beretta 12 Ga., O/U
Armitalia Lucchini 20 Ga. Double Barrel
Mossberg 12 Ga., Pump, 500 ABR
Rossi 12 Ga. Double Barrel, Exposed Hammers
Stoeger 12 Ga., Coach Gun
Mossberg 12 Ga. Pump, Shot & Slug Barrels
Mossburg 410 Pump, 2 Barrels
Stevens 20 Ga., Single Shot
H & R 12 Ga., Single Shot
Asst. Ammo 308-9MM-12-12 Ga.

TRACTORS - SELL AT 12 NOON

'78 John Deere 4630 Cab w/Great Bend Loader & Grapple, S/R Trans., Quick Hitch, Runs Good
John Deere 2840 w/Westendorf Loader
Ford 4100 Diesel
John Deere 420 N/F, 3 Pt.
Farmall B N/F
John Deere 2510 Gas, W/F, Dual Hyd.
John Deere 5103 Diesel, Canopy, 1275 Hrs., Nice

MACHINERY

M & M Hyd. Tree Shear for Skid Loader
JD 4 Bottom Semi, Mt. Plow
MF 3 Pt. 3 Bottom Plow
N.H. 617 Disc Mower w/Cart
Gravity Box w/Wagon
Wagon Gear
(2) 3 Pt. Rock Rake
3 Pt. 6' Blade
3 Pt. 6' Box Blade
3 Pt. Bush Hog 7' Offset Cutter
Bush Hog 2615 Legend 15' Folding Cutter
Vicon 3 Pt. 7' Disc Mower, Ex. Good

4 Skid Loader Rock/Brush Buckets w/Grapples - New
Quick Plates for Skid Loader - New
Receiver Hitch Plates for Skid Steer - New
2 Pr. Fork Ext. for Pallet Fork - New
Danuser 3 Pt. HD Post Hole Digger w/Stand, 2 Augers

VEHICLES & TRAILERS

'97 Chevy 1/2 Ton, 3 Door, Auto, V-8, 4x4, 116K, Red, Shedded & Nice, Clean & Good
'07 Buick LuCerne 3.8, Leather
'89 Ford 350 1 Ton Bucket Truck Diesel, 5 Speed
Bumper Hitch 16' Utility Trailer w/Dove Tail
Aluminum Motorcycle Trailer - Title (Pull Behind Motorcycle)
Bumper Hitch 10' Trailer w/Ramp
Bumper Hitch Shop Built Tandem Axle Trailer
'73 GMC Grain Truck, 16' Bed & Hoist, V-8, 4-2 Speed
'89 White Volvo Single Axle Tractor, L10 Cummins, 7 Speed, Air Brakes, Steel Flatbed w/Gooseneck Ball
'95 Ford 350 1 Ton 4x4, Diesel, 5 Speed, Bed & Hoist
'69 Chevrolet Grain Truck V-8, 5-2 Speed, 16' Bed & Hoist
'97 Ford Expedition
'78 Ford 250 3/4 Ton, V-8, 4x4, Bed & Hoist
Parkhurst Gooseneck Grain Trailer w/Hoist, Triple Axle, 16'
Shop Built 12' Single Axle Flatbed Trailer
Shop Built Gooseneck 20' Flatbed Trailer
Older Gooseneck Horse Trailer w/Dressing Room on Front 20'

TOOLS & MISC.

Stihl Concrete Saw
3-5 Stihl Chainsaws
2-3 Trailer Loads of Misc. Tools
8-10 Sucker Rods - Other Metal
(20) 24' HD Free Standing Corral Panels
Round Pen
13 Panels

Sam CRAWFORD Auction Service LLC



TERMS: Cash or good check. Nothing removed until settled for. Not responsible for accidents. Lunch available. Statements made day of sale take precedence over printed matter. All items sell as is. No warranties given or implied.

417-998-6629
Cross Timbers, Mo.

CrawfordAuctionService.com



Sam
417-328-9137

Chase
417-399-1904

Chance, CAI
417-298-1751

Tom Poynter
Jack Lancaster

JoAnn's Printing 660-5472299



AUCTION

Due to selling his home Doug Jung will sell the following personal property at auction on:

Sat. August 27, 2022 @ 10AM

DIRECTIONS: (1755 Jefferies Rd, Montreal, MO) From Montreal Missouri highway 7 and E junction travel E highway approx. 1 mile to Jefferies Road on the left, Travel Jefferies Road approx. 1.7 mile to auction site. (Look for Sellers Auction Signs Sale Day)

TRACTOR & VEHICLES: Kubota 4WD L3901 (310hrs) W/LA 525 Loader ~ 2002 F150 XLT FX4 5.4 Triton V8 198xxxmi. ~ 99 Ford Ranger XLT 4x4 New Tires 160xxxmi. ~ Honda 4x4 4wheeler 420 Electric Shift 1560Mi. ~ Kubota G1800 Diesel Mower All Wheel Steer 866hrs ~ 12 x 6'4" Single Axle Trailer

GUNS: American Tactical AR15 223/NS009520 ~ Remington 870 Super Mag Pump Rifle 12Ga/RS03307R ~ 7mm 08 Browning/ 27950mm351 W/Leupold Scope Vx3 ~ Remington 12ga 30" Barrel/230532 ~ Browning A5 12Ga Semi Auto 32" Barrel/8553 ~ Stevens Savage 410/22 ~ Ruger 30-06 Mod 77/79-92119 Tasco Scope ~ Ruger 270 M77 Mark 2/782-74343 ~ Remington Target Master 22 ~ Taurus Millennium G2 40Cal /P2140G2 ~ Browning Gun Safe

MACHINERY & TOOLS: Land Pride RCR 1260 Brush Hog ~ Pull Behind Flip Disk for 4 Wheeler ~ Kubota Seeder ~ County Line 5ft Box Blade ~ 3 Prong Chisel Plow ~ 5ft Roller ~ 5ft Lift Type Disk ~ 6) 16ft Wire Cattle Panels ~ Lg Lot of Sheet Metal Tools ~ Milwaukee Hole Hawg ~ Milwaukee 3/8" Drill ~ Roll Capper ~ 18Vt DeWalt Set ~ Bostitch Air Compressor ~ Lg Lot of Hand Tools ~ Tool Organizers ~ Metal Cut off Saw ~ Bulk Grain Bin ~ 30T Log Splitter ~ Several Extension & Step Ladders ~ Heavy Duty Shelves ~ Vice ~ 30gal Sprayer ~ Brute 2800 PSI Pressure Washer ~ Troybilt 5500 Watt Generator ~ Homelite 45CC Chainsaw ~ PVC Cutters ~ Lg Lot of Sockets ~ 2) Squirrel Cage Fans ~ Stihl FS-36 Weed Eater ~ Stihl Blower ~ HD Extension Cords ~ Live Traps ~ 21ft of 8" Dbl Wall Furnace Pipe ~ Furnace Humidifiers

FURNITURE & MISC: 5 Gal Whiskey Crock ~ Frigidaire Freezer ~ Whirlpool Refrigerator ~ Sectional w/3 Electric Recliners ~ China Cabinet ~ Dining Table & 6) Chairs ~ Queen Bed ~ Dresser w/Mirror ~ Night Stands ~ Lamps ~ Pictures including 3) Hayden Lambson-Territorial Dispute, Suspicions of Fall & Signs of the Time



Auctioneer's Note: Very nice, clean, live auction. Plan to attend! Plenty of parking.

Sellers Auction Service

"We Were Born Sellers"

Complete Auction Service

www.sellersauctionservice.com

Terms: Cash or Check with proper I.D. Not responsible for accidents or losses. Items will be sold As Is/Where Is with No Guarantees. Nothing to be removed until paid for. Refreshments available. Announcements made on sale day take precedence over any printed materials.



GREGG SELLERS, AUCTIONEER
573-480-4400

September 7,8,9, 2022

BOONE COUNTY

DRAFT & QUARTER HORSE SALE LLC

Located at the Missouri State Fairgrounds, Sedalia MO

Online Bidding
with
TV Auctions



83 & # 84
7 & 8 yr old team of Belgian Geldings

Fall Schedule

Mon. & Tues.
September 5th & 6th

-Check-in for:
Tack, Carriages, & Antiques

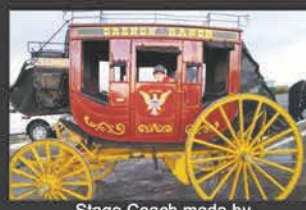
Wed. September 7th - Tack,
Carriages,
Harness, Collars, Saddles,
etc.

Thurs. September 8th -
Draft Horses, Draft Crosses,
Friesians, Gypsies,
Haflingers & Driving Horses

Fri. September 9th -
Quarter Horses, Light Teams,
Gaited Horses, Ponies,
Mules & Donkeys



Chuck Wagon



Stage Coach made by
Kenny Martin

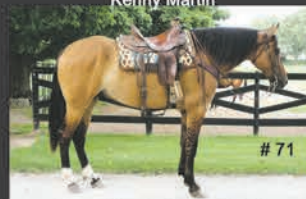


The Bain Box Wagon



506

4 yr old Reg. Quarter Gelding



71

5 yr old Draft Cross Gelding



483

3 yr old Reg. Quarter Gelding



1

16 yr old Belgian Gelding



73

8 yr old Draft Cross Gelding



485

4 yr old Reg. Quarter Gelding

Joe Raber
719-431-3137

Joe's email: boonecountyhorseauction@safecommail.com

Lonnie's email: lrmler5717@yahoo.com

Website: www.BooneCountyHorseSale.com

Lonnie Miller
260-350-4637

AUTO BODY TOOLS-PICKUP-TRAILER-GOLF CART-GUNS AUCTION

SATURDAY AUGUST 27, 2022 • 10:00 AM

LOCATED: 15138 BUSINESS HWY 13, BRANSON WEST MO

FROM BRANSON WEST HWY MO-13 & BUS HWY 13 TURN LEFT ON BUS 13, GO 3/10 MILE TO AUCTION ON LEFT. WATCH FOR SALE SIGNS. RESTROOMS, BREAKFAST & LUNCH AVAILABLE.

FOR PICTURES SEE WEBSITE OR AUCTION ZIP.COM.

Terms: No guns on premises until auction day. Bank letter of credit required addressed to Melton Auction & Realty for purchase over \$5000

ROTARY LIFTS-CHASSIS LINER 10 TON FRAME MACHINE-TOOLS

(2) ROTARY 9000 LB 2 POST LIFTS—CHASSIS FRAME 10 TON DRIVE ON FRAME MACHINE—AC DELCO 20 TON PRESS—CAMPBELL HAUSFELD 110 AIR COMPRESSOR—3 PHASE 10 HP 100 GAL AIR COMPRESSOR—SNAP ON PLASMA 25 CUTTER—SNAP ON MIG WELDER W/BOTTLE—SAND BLAST CABINET—BRANICK STRUT COMPRESSOR—DRIVE ON MOTORCYCLE LIFT—ACCU TURN TIRE CHANGER NEEDS WORK—HYDRA GRAPHICS DIP TANK—PAINT SHAKER—MUFFLER JACK—OIL DRAIN STAND—SHRINKER STRETCHER—MOTORCYCLE LIFT—AIR TANK—OXYGEN ACETYLENE TORCH—NUTS & BOLT BEN—FLUKE MULTI METER—PT MULTI METER—PT DIAGNOSTIC SCANNER—SNAP ON COOLING TESTER—WURTH FLANGING TOOL—6"H GRINDER—5" VISE—AIR BISCUIT JACK—SPOT WELD DENT PULLER—SPOT WELDER—DENT FIX WELDER—PAINTLESS DENT TOOLS—BODY HAMMERS—MAC CREEPER—10 TON JACK STANDS—BODY RACKS—HANGING RACKS FOR PAINT PARTS—SAW HORSES—BODY STANDS—DOOR RIVET GUN—POXY GUNS—WORK STANDS—WORK LIGHTS ON STANDS—CURING LIGHT—MATCO BLIND RIVET ADAPTER—AP AIR SHEAR—MAC AIR STEP TOOL—MIGHTY MAC VACUUM GAUGE—HOLE SAW KIT—LEAK DETECTOR—SNAP ON AIR ROTARY SANDER—AP WINDSHIELD REMOVAL KIT—BLACK HAWK 5 TON FLAT BODY CYLINDER KIT—SPILL KIT—CASTOR CAMBER GAUGE—SLIDE SLEDGE HAMMER KIT—MAC HUB CAP & WHEEL REMOVAL KIT—EVER TOUGH THREAD CHASER—SNAP ON TAP & DIE—SNAP ON RETHREAD SET—STANT COOLING PRESSURE TESTER—(2) MARSON THREAD SETTER—TIF LEAK DETECTOR—VA TAP & DIE SET—SNAP ON BOLT GRIP PULLER—MAC, SNAP ON DIE GRINDERS, SANDERS, AIR SAWS—STECK POP RIVET TOOL—CARBIDE ROTARY GRINDER TIPS—MALCO & BLAIR SHEET METAL CUTTERS—SLIDE SLEDGE—HAND FILE HOLDERS—9" SNAP ON BUFFER—AIR FILES STRAIGHT LINE—INGERSOL RAND 6" GRINDER/BUFFER—RYOBI CORDLESS DRILL & IMPACT—TRAM GAUGE—8' WOODEN LADDER—DEWALT ELECT SCREW DRIVER—COME ALONGS—VISE GRIPS—LONG HANDLED TOOLS & BROOMS—CHAINS, FRAME PULLING CLAMPS—4 WHEEL CART—MONKEY STICK—MORGAN KNOCKER—KANSAS JACK POWER TOWER—RED DEVIL PAINT SHAKER—EYEWASH STATION—PORTA POWERS—LIGHT BULB CABINET—EXT CORDS—AR BLUE CLEAN ELECT PRESSURE WASHER—JUST RITE FIRE PROOF RAG BUCKET—CRAFTSMAN 5 HP 12 GAL SHOP VAC—SNAP ON 134A GAUGES—BLUE POINT AIR VAC PUMP—TIF REFRIGERATION SCALE—RECLAIM TANK—ATD 7" BUFFER—CORNWELL FLUORESCENT DROP LIGHT—MILWAUKEE BUFFER—4 TON FLOOR JACK—DEWALT BUFFER—BLUE POINT BATTERY TESTER—2 TON FLOOR JACK—SNAP ON JUMPER BOX—SNAP ON BATTERY CHARGER—MILWAUKEE CORDLESS BUFFER—BLUE POINT CHARGER—HEAT GUN—PLASTIC MINI WELL WELDER—ASTRO BUFFER—MAC 4 WHEEL STOOL—PLASTIC CAR WRAP DOLLY—4 STATIONS, PAINT MIXING STATION, APPROX 108 COLOR SELECTOR—PIN STRIPING—THINNERS, HARDENERS—PAINT GUN WASHER—PAINT CUPS & LIDS—METAL WALL CABINETS—LOCK OUT SET—AC O RINGS, FITTINGS, SPRING ASSORTMENT—ASSORTED TRIM FASTENERS—TWECO WELDING HELMETS—MISC CAR & MOTORCYCLE PARTS

TRAILER-PICKUP-GOLF CART

2014 LOAD RUNNER 18' BOX TRAILER, BUMPER HITCH, TANDEM AXLES, DIAMOND PLATE FENDERS—1972 CHEVY CUSTOM 10, 350 NEW REBUILT ENGINE W/2500 MILES, NEW REBUILT TRANSMISSION, AUTO, NEW TIRES, RALLY WHEELS, NEW SHOCKS—EXGO GOLF CART 4 SEATER, ELECTRIC, NEW BATTERIES, NEW CHARGER, ZIP AROUND ENCLOSED COVER

GUNS

1. RG24, 22 CAL PISTOL 2. TAURUS PT24-7 PRO L8 AUTO SER# SAT50342, 40 CAL 3. SMITH & WESSON CARL WALTHERS M&P22 SER# M9016978 4. KELTEC 22 CAL SER# CKL66 5. JIMENEZ 22 CAL SER# 1236050 6. PHOENIX ARMS 22 LR 7. RAVEN ARMS 25 CAL SER# 1652167 8. HERITAGE MFG 22 CAL SER# R37685 9. HI POINT MODEL C9, 9MM LUGER SER# P10082819 200 ROUNDS 9MM AMMO

APPLIANCES

MAYTAG WRINGER WASHER, WORKS—SAMSUNG 3 DOOR FRENCH DOOR REFRIGERATOR—FAN--MOVING BLANKETS



OWNER: RIVER TRAIL AUTO BODY

ANNOUNCEMENTS MADE ON SALE DAY WILL TAKE PRECEDENCE OVER ANY OTHER PRINTED MATERIALS. NOT RESPONSIBLE FOR ACCIDENTS OR LOSS OF ARTICLES ON OR NEAR SALE SITE.

MELTON AUCTION & REALTY CO LLC



meltonauctionrealty.com | roger@meltonauctionrealty.com

Roger Melton | Nixa, Mo | 417-830-0153 or 417-725-1801

Brad Cole | Nixa, Mo | 417-840-2950

Tanner Foster | Galena, Mo | 417-840-5519

8010725

1890 GOLD TESTING KIT: Glass acid beakers + antique wooden case. \$100. 573-764-3517. Call in PM.

SMALL ANTIQUE 4-H.P. ENGINE: built by continental motor corporation. \$300. 573-308-5884. Rolla.

DRAPES AND CURTAIN RODS: Off-white, various sizes, \$15 for all obo. 636-239-2695. Washington.

2006 FORD FREESTAR VAN: SLE Series, Automatic. \$2,800 OBO. 573-308-9547. Licking.

I AM LOOKING FOR LAND TO RENT TO GROW WHEAT: I can pay a good rate per acre for land that is fairly level, decent soil and in a 30 mile radius of Marshfield. I am looking for 80-500 acres. 417-741-2288. Marshfield.

KITCHEN FAUCET MOEN: Single lever, sprayer, new cartridge. \$45 obo. 636-239-2695. Washington.

CERAMIC CANISTER SET: With cutting board that fits in kitchen counter-top. Various species of ducks on surface. Set \$30 obo. 636-239-2695. Washington.

GREAT DANE PUPPIES: AKC. Fawn/Brindle Puppies. www.GreatDanes4U.com 417-859-0844. Marshfield.

BASSETT HOUND PUPPIES: Reserve now. Ready in September. May trade for almost anything. 417-650-0402. Lebanon.

PATTERDALE TERRIER PUPPIES: Great hunters & companions. \$550. 573-247-2305. Salem.

2019 DOLMAR 245.4 WEED TRIMMER: Works great! \$190. Call 417-531-0545. Lebanon.

CALLAWAY COUNTY LAND AUCTION

6495 State Rd. UU, Fulton, MO
150 +/- Acres Offered In Tracts
& The Entirety



Sells To The High Bidder Regardless of Price

Hunting / Tillable / Recreational / Investment

**Preview Dates: Tuesday, August 16th
& August 23rd | 4:30 - 6:00 p.m.**

Tract 1: 78 +/- Acres & Shop

**Tract 2: 72 +/- Acres, Home
& Livestock Barn**

Endless Building Sites For Your Dream Home • Hard Surface Road Frontage
• Potential Development Property • Pasture & Pond Perfect for Livestock • Lots of Timber & Wildlife For Outdoor Enthusiasts
• Approx. 37 Ac. Currently Tillable
Opportunities Are Unlimited With This

**Online Bidding Ends: Tuesday,
August 30th at 12:30 p.m.**

**Sellers: Family of the Late John
& Adine Gowin**

Atterberry Auction & Realty Co...
Your Real Estate At Auction Specialists
For complete terms, listing, catalog, pictures & bidding, visit atterberrysells.com, email contactus@atterberryauction.com, or call (573) 474-9295. Please contact our office if you need help with the online bidding process.



www.AtterberrySells.com
573-474-9295

CUSTOM BUILT RANCH STYLE HOME ON 5 ACRES WITH LARGE SHOP



Details:

- Builders Home on 5 Acres
- Large Shop with Potential Living Quarters
- 2,400+ Square Feet, 4 Bedrooms & 3 Full Bathrooms
- Finished Walkout Basement with Plenty of Storage Space
- Custom Woodwork Throughout
- Wooded lot with large back deck

*Also Selling Household Furniture
and Accessories, Wood Working
Tools, and Much More!*

Open House Dates:

Thursday, August 25 | 12-1 p.m.

Thursday, September 1 | 4:30-5:30 p.m.

Online Bidding Ends:

Thursday, September 8 | 12:30 p.m.

**10701 Bozarth Lane,
Columbia, MO 65201**

Check It Out & Bid At AtterberrySells.com

Atterberry Auction & Realty Co...
Your Real Estate At Auction Specialists



www.AtterberrySells.com
573-474-9295

Starnes Auto LLC

22115 Rt. 66 • Lebanon, MO 65536

417.718.2707 Cell

417.588.3159 Office

www.starnesauto.com

1998 CHEVY SILVERADO EXT CAB GREEN, 142,XXX MILES	\$4,500
1999 GEO TRACKER 5 SPEED MAROON, 186,XXX MILES	\$4,200
2000 CHEVY TAHOE LIMITED BLACK, VIN #4286, 231,XXX MILES	\$4,850
2001 FORD F150 EXT. CAB BLACK, VIN #429, 261,XXX MILES	\$7,250
2002 FORD F150 LARIAT 4 DOOR MAROON, VIN #2178, 233,XXX MILES	\$6,250
2004 CHEVY AVALANCHE MAROON, VIN #7743, 302,XXX MILES	\$6,950
2004 CHEVY COLORADO COPPER, VIN #2952, 194,XXX MILES	\$5,200
2005 CHEVY TRAILBLAZER LS BLACK, VIN #2227, 122,XXX MILES	\$4,450
2005 SATURN VUE TEAL, VIN #1632, 105,XXX MILES	\$2,950
2008 SATURN VUE MAROON, VIN #6528, 104,XXX MILES	\$6,250
2009 BUICK ENCLAVE MAROON, VIN #6528, 109,XXX MILES	\$7,950
2010 CHEVY HHR BLACK, VIN #6638, 120,XXX MILES	\$4,550
2013 BUICK VERANO CHARCOAL, VIN #0800, 115,XXX MILES	\$8,500
2015 BUICK VERANO MAROON, 88,XXX MILES ...	\$10,200
2018 FORD F150 XLT CREW CAB BLUE, 42,XXX MILES, NO FINANCING	\$42,500
2018 CHEVY SILVERADO 1500 CREW CAB 4X4 Z71 RED, 63,XXX MILES, NO FINANCING.....	\$39,500

WE DO ALIGNMENTS!

5 GAL. PLASTIC BUCKETS: with lids. \$3 each. 636-239-2695. Washington.

FOR SALE: 30 5x5 round bale grass hay. \$70/Bale. 573-512-2059. Richland.

2000 CHEVY BLAZER LS: Automatic. \$2,650 OBO. 573-308-9547. Licking.

2022 SHINDAIWA EB252 LEAF BLOWER: Like new condition! \$125. Call 417-531-0545. Lebanon.

2 ILLINOIS 1927 LICENSE PLATES: \$25 each. 573-308-5884. Rolla.

PRAIRIE SWAP: Buy, sell, trade, look! September 15th, 16th & 17th in Wheatland, MO. **VENDORS WANTED.** Acres of space to sell new or used items, small animals, guns, ammo, tools, etc. www.facebook.com/Prairieswap.

FOR SALE AKC BEAGLE PUPS: Tri-color males & females. 8 weeks. \$300. 2 Lemon & white males 16 weeks. \$400 each. Shots & dewormed. 573-627-2309. Sullivan.

POOL TABLES: Installations, moves, recovers, repairs, accessories, etc. 573-646-1700.

KILMER FARM EQUIPMENT CONSIGNMENT AUCTION

SATURDAY, AUGUST 27- 9:30 AM

14769 Cattle Lane, Versailles, MO 65084

Directions: At the Intersection of Hwy 5 and Hwy 52 in Versailles, go North on Hwy 5 for 1 mile to Cattle Ln then turn Right or East and go ¾ mile to Sale Site.



TRACTORS, CONSTRUCTION EQUIPMENT, TRUCKS AND TRAILERS, GRAIN CARTS AND WAGONS, CUTTERS, TILLAGE, COMBINE AND HEADS, FEED MIXERS, MISC. EQUIPMENT, HAY EQUIPMENT, SILAGE EQUIPMENT



BID LIVE Live Online Bidding Powered By **proxibid**

BID NOW Online Bidding Provided By **Equipmentfacts**

Wheeler AUCTIONS & REAL ESTATE
23101 HWY. 24, PARIS, MO 65275 | 660-327-5890
WWW.WHEELERAUCTIONS.COM

KILMER FARM EQUIPMENT, LLC
14270 Hwy. 52, Versailles, MO 65084
(573) 378-6615

FOR MORE INFO AND PHOTOS VISIT WWW.WHEELERAUCTIONS.COM!

BUFFALO LIVESTOCK MARKET LLC



276 Hwy 32 W., Buffalo, MO

August 20th, 2022

Receipts: 1006 Head

Feeder Cattle Steady to \$5 Higher. Cows & Bulls Steady to \$2 Higher.

REPRESENTATIVE STEERS

300-400 @ 195.00 to 234.00
400-500 @ 195.00 to 219.00
500-600 @ 190.00 to 213.00
600-700 @ 180.00 to 195.00
700-800 @ 165.00 to 178.00
800-900 @ 152.00 to 169.00

REPRESENTATIVE HEIFERS

300-400 @ 180.00 to 208.00
400-500 @ 178.00 to 199.00
500-600 @ 168.00 to 191.00
600-700 @ 160.00 to 165.00
700-800 @ 147.00 to 161.00
800-900 @ 132.00 to 145.00

FEEDER BULLS

300-400 @ 190.00 to 236.00
400-500 @ 175.00 to 209.00
500-600 @ 168.00 to 175.00
600-700 @ 157.00 to 166.00
700-800 @ 150.00 to 165.00
800-900 @ 130.00 to 148.00

STOCKS COWS

Bred Cows 900.00 to 1400.00
Cow/Calf Pairs 1100-1425

SLAUGHTER BULLS

High Yield 108.00 to 115.00
Low Yield 85.00 to 102.00

SLAUGHTER COWS

Fleshy 86.00 to 98.00
Med Flesh 90.00 to 101.00
Thin Flesh 76.00 to 94.00
X Thin Shelly 65.00 Down

Strong Markets continue still premiums for Weaned and VAC Cattle

SHEEP AND GOAT SALE

Tuesday, August 23rd at 6PM

MON-WED MARKET REPORT

Listen to KJEL 103.7FM • Lebanon or KYOO 99FM • Bolivar

VIEW OUR SALES AT CATTLEUSA.COM

CALL FOR TRUCKING OR ON-FARM VISIT

Lyle Caselman • Owner-Manager
417-345-7876 • mobile 417-533-2944
Leon Caselman • Owner
417-345-4514 • mobile • 417-588-6185

GOLDENDOODLE LOOKING FOR NEW HOME: 13 weeks old. Current on shots. Please contact 417-554-0349.

SUPER MAC 500 UTV-EFI: 4x4, wench, windshield. \$4,000. 417-321-1928. Osceola.

CONSIGNMENT SALE

August 27th @ Noon

FOR ALL CONSIGNMENT INFORMATION
CALL MITCH 417-241-5558
OR CHANTIL 417-217-0612
WATCH OUR FACEBOOK PAGES FOR MORE SALE INFORMATION

Texas County STOCKYARDS
245 2nd St. • Summersville, MO

WANTED KAWASAKI MULE OR LAND STAR SIDE BY SIDE/ATV: Running or not. 417-414-3686.

FOR SALE: New in the box, 2 Retrospec Chatham 26" Cruiser Bicycles. Blue in color. \$280 each. 913-952-7476 or 480-363-6060. Osage Beach.

MID MISSOURI STOCKYARDS

REGULAR SALE EVERY THURSDAY 11 AM

WATCH OUR WEEKLY SALE IN REAL TIME ON DVAUCTION.COM

For Farm Visits, Market Updates, or Trucking
Call Zach Cox 417-777-1320
Dan Romine 573-578-4939

**Competitive Buyers!
Competitive Commission!
Competitive Market!**

Barn: 417-532-9292 

I-44 • Exit 123 "just outside of Lebanon"
17505 Route 66, Phillipsburg, MO 65722
For weekly market updates, visit us at www.midmostockyards.com

CATAHOULA LEOPARD PUPS: 3 leopards, 1 red merle. Natural bob tail. \$150. 417-543-4816.

WE HAVE MOBILE HOMES:

Instock new arrivals (8) homes, need to go as soon as possible! 573-499-9993.
columbiadiscountshomes.com

2 DAY FARM AUCTION

Due to the death of LaVerne Shanks, we will sell the following personal property at public auction. From St. James, Missouri take Hwy. 68 5 miles west to Hwy. H. Continue on Hwy. H for 9 miles going through High Gate to auction or from Belle, Missouri take Hwy. 28 west 6 miles to Hwy. C. Turn left and go 3 miles to Hwy. H. Turn right and continue 1 1/2 miles to auction.

SATURDAY, AUGUST 27, 2022 8 A.M. START: Household, Furniture & Antiqu, Shop Tools, Mowers & Shop/Farm Related Items
Suzuki, Kawasaki & Honda motorcycles (not running) - Blacksmith post vice on stand - A frame - Honda generators - Parts washer - Welding table - Central Pneumatic 21 gallon 2.5 hp. air compressor - Acetylene torch set (no lease) - Super 24 Stihl saw - Nut & bolt cabinet full of hardware - Battery chargers - 6 inch x 10 steel pipe - M&M powerplant motor - Stihl weed eater - Transmission jack - Press on stand - Dayton Oil fired heater (110,000 BTU) - Chainsaws - Lots of radiators & truck motors - Lot of riding lawn mowers - Scrap pile of metal - Hyper Tough push lawnmower - MS170 Stihl saw - Several car engines & transmissions - Assortment of hubcaps - Push type DR trimmer - Aluminum 4 wheeler ramps - Honda 90 3 wheeler - John Deere 8 tractor w/flat spoke rear wheels - Rolls of chicken wire - Handler rear tine tiller - 18 ft. metal cattle alley - Several gates & panels - Powder River head chute - 4 wheel wagon frame - Husqvarna 124cc weed eater - Rolls of barbwire - Continental 30 ton shop press - Several vices - Guardian 5 speed heavy duty drill press - Belsaw 1/2 hp. 7 inch grinder - 400 6 ft. fence posts - Schumacher 200 amp starter/charger - Brave 20 ton 5 hp. wood splitter w/motor - 8 ft. x 14 ft. diameter Butler grain bin (to be removed)

SUNDAY, AUGUST 28, 2022 1 P.M. START : Farm Machinery, Tractors & Equipment
International road tractor cabover C04070 Transtar - w/Cummings 9 or 10 speed motor - Single axle 16 ft. drop deck semi trailer - John Deere model 40 self propelled combine - John Deere pull type rake - John Deere 3 pt. bushhog - 15 ft. Bushhog brand bushhog - 8N Ford tractor - 5 ft. Bush Hog bush hog - Massey Ferguson industrial loader tractor - Several mobile homes - Gleaner combine Ell (self propelled) - Super C Farmall tractor - Massey Ferguson 4 pt. plow - 14 ft. utility trailer - 5 ft. 3 pt. Bush Hog bush hog - New idea 5 bar hay rake - John Deere manure spreader w/spoke wheels - (needs wood) - 18 ft. flatbed trailer - 20 ft. flatbed gooseneck trailer w/wire bottom bed - 3 pt. post hole digger - 10 ft. wheel disc - John Deere 24T balers (several) - Hesston 5500 baler (for parts) - Farmall 400 gas tractor - International pull type hay rake - John Deere 9 ft. pull type haybine - John Deere 2630 tractor - Hesston 5500 & 5540 round balers - John Deere 9 ft. haybine - New Holland Hayliner 268 square baler - Vermeer 504C round baler - Blue Mule cattle head gate - Sawmill table - 3 pt. post driver - John Deere #46 loader - 3 pt. boom pole - Cattle head gate - 4 wheel farm wagon w/flat bed - Long #360 farm tractor (not running) - 5 ft. 3 pt. bale spike (tractor loader) - 5000 Ford tractor w/diesel motor, steering & - transmission dismantled in shop (in pieces) - 3 pt. 7 ft. disc - 2 bottom 3 pt. plow - Allis Chalmers 13 hole grain drill - Ford 5000 gas tractor - CA Allis Chalmers NF 3 pt. - New Holland 2 ton grinder/mixer - New Holland 350 round hay baler - John Deere 494 4 row planter - Farmall M tractor w/NF & 3 pt. - Farmall H tractor w/cultivator - International crawler/dozer (model TD14A) - 300 gallon farm tank w/stand - Scott easy flow pull type seeder - Allis Chalmers 3 pt. finish mower - 16 ft. stock trailer - WW 16 ft. stock trailer - 20 ft. gooseneck stock trailer w/title **Cars & Trucks** 1997 Ford F250 Super duty 4x4 pickup - w/Hinkler snow blade - 1970 Ford F350 - Ford F350 1 ton w/11 ft. flatbed - 1995 Buick Regal 4 door car - 1979 Ford truck - Chevrolet Landau car - 1956? Studebaker w/title - 1985? Ranger pick up - 1991 Ford F250 XLT 4x4 w/title - 1990 Ford F250 4x4 w/title - 1990 Ford Ranger pickup - 1990 Ford F150 4x4 pickup - 2001 Ford Taurus SES w/title - Chevrolet Lumina - 1975 C65 Chevy dump truck w/8 ft. bed - 1972 Dodge Dart w/title - Buick Century w/title - 1995 Buick Skylark - 1983 Chevy Vandura 2500 van - 1987 Dodge Ram pickup - 1988 Ford Tempo - Chrysler LXI - 2002 Ford Taurus - 12 ft. flatbed for 1 ton truck - Claymore 14 ft. camp trailer - Pickup camper shell - Pickup trailer - Above vehicles are not running

MANY MORE ARTICLES TOO NUMEROUS TO MENTION

OWNERS: THE SHANKS FAMILY; MARY LAYTON, PR - 10539 STATE ROUTE H, BELLE, MO 65013; AUCTIONEER'S NOTE: Lots of items sitting in field, some needing repair. Small items, household and shop tools will sell Saturday. All machinery, equipment and vehicles will sell Sunday. You won't want to miss this auction! Off the road parking available. Auction held rain or shine!

TERMS: Not responsible for accidents or losses, should they occur. Nothing removed until paid for. No buyers fee. Lunch Served, ALL ANNOUNCEMENTS MADE SALE DAY TAKE PRECEDENCE OVER ALL PRINTED MATERIALS, Cash or check with photo I.D., No debit/credit cards.

SALE CONDUCTED BY LORTS AUCTION SERVICE ST. JAMES, MO 65559
AUCTIONEERS: Larry W. Lorts & Gary R. Lorts Licensed and Bonded • 573-263-1509 & 573-263-0243
"like" us on Facebook- Lorts Auction Service or view this auction on line at www.threeriverspublishing.com or Auctionzip.com (auctioneer ID # 42353)

Callaway Livestock Center, Inc.
Kingdom City, MO

Watch live or bid online thru
D.V. Auctions
www.CallawayLivestock.com

SPECIAL COW SALE
THURSDAY NIGHT
SEPTEMBER 1ST, 2022 AT 6:00PM

Estimating 700 to 800 hd of Bred Cows,
Cow/Calf Pairs & Breeding Bulls.

EARLY CONSIGNMENTS

L&S: 10 Big Fancy 1st Calf Angus Hfrs Circle A Genetics, Bred to Sydgen Omaha, Calf Oct 10th for 20 days, Hfrs have had all vaccines, weighs 1100 lb plus include scour implant. **SCHUBERT FARMS: 40** Fancy 2 to 5 yr old Blk or Blwf Cows, Cows very gentle with fancy 300 lb Blk Calves by side, Ear Tagged to match, mothers all worked, exposed to fancy Blk Bulls from May 15th to July 15th. **L-H HERD DISPERSAL: 65** Big Fancy Blk or Blwf Cows, Cows will be 5 and 9 yrs old with fancy 3 to 500 lbs Blk Calves by side, running back with fancy Angus Bulls. **DEEKEN: 30** Fancy Angus Cows, Cows be 3 to 4 yrs old, Bred to high powered Angus Bulls, Cows be heavy 3rd period with 3 calves on ground, all shots, Cows be very gentle. **SMITH: 60** Fancy 3 to 4 yr old Big Blk or Blwf Cows, Bred to Fancy Angus Bulls, Cows start calving Sept 15th. **MASSEY: 35** Big fancy Red Angus Cows, Cows will be 3 to 5 yrs old, Bred to Smokey Y Ranch Registered Red Angus Bull, all shots current, very gentle, start Calving Sept. 3rd. **MEYER: 65** Big fancy Blk or Blwf Cows, Cows will be 3 to 5 yrs old, Start Calving Sept 10th, all shots current, Bred to fancy Registered Angus Bulls, out of Montana. **ZUERNER: 65** Big fancy Blk or Blwf Cows, Cows will be 5 to 9 yrs old, Bred to Circle A Bulls, due to Calf Feb 20th for 70 days. **10** Big fancy Blk Cows, Cows be 5 to 9 yrs old, very gentle with 3 to 400 lb fancy Blk Calves, Bred Back to fancy Angus Bulls. **25** Big fancy Blk or Blwf Cows, Cows be 3 to 5 yrs old, Bred to Angus Bulls, all shots, due Sept 10th. **GIROD DISPERSAL: 40** Big fancy Blk or Blk Cows, Cows be 5 to 9 yrs old with fancy 3 to 400 lbs Calves by side, running back with Angus Bulls. **30** Big Blk or Blwf Cows, Cows be 3 to 5 yrs old, Bred to Angus Bulls, Cows start Calf Feb 15th. **75** Blk or Blwf or Char Cows, Cows be 5 to 10 yrs old, running back with Angus Bulls, Cows be in the 1st and few 2nd period. **BULLS: 5** 3/4 Angus, 1/4 Simmental, 13 month old AI Sired Bulls. **1** Fancy 2 yr Registered Char Bull.

Ad made 2 weeks ahead of Sale. Some areas are getting some moisture but most of these cows are moving because of Drought Conditions

For more information contact:

Roger Temmen
573-680-4538

Lynn Crouch
417-999-4148

Myles Whorton
573-263-3759

Claude Niemeyer
573-470-1017

Jack Harrison
573-999-7197

Glen Stegman
573-619-8495

Chad Nickelson
573-631-1627

Jared Simpson
573-247-0786

John P. Harrison
573-220-1482

573-642-7486

Larry Heisel Rentals
Have Rock? How about 3,500 lbs. of Hammer
Call Larry! We Deliver!
573-779-1500
www.larryheiselequipment.com
Rental Available in 636 or 573 area code

Fly Free with AFC.

AFC
ALTOSID® FLY CONTROL
PRODUCTS
KENT
Kropf Feeds
Located in the Heart of the Amish Mennonite Community!
417-345-8600
19 Prairie Lane, Buffalo

WE BUY AND SELL
new and used mobile homes

(417) 501-1061

STORY & PICTURES BOOK OF OLD LINN CREEK: Haha Tonka and Camden County, by T. Victor Jeffries, 72 pages. \$5.00 postpaid. (417)532-2045. (Leave message and phone number). Lebanon.

LAWNMOWER MTD YARD MACHINE: 4H.P. Briggs & Stratton engine, 22" cut, self-propelled mulcher. \$125. 210-787-8222. Linn Creek.

POLK COUNTY, MO. SESQUICENTENNIAL PHOTO ALBUM 1835-1985: By George Hopper and James Sterling, \$25.00. 417-532-2045. Lebanon. (Leave message and phone number).

LOG SIDING: 2X8 Pine/Western Cedar
www.pineridgerustic.com 573-729-7226. Salem.

AUSTRALIAN SHEPHERD PUPPIES: 2 rounds of shots, tails & dewclaws done. Ready to go. Tris for \$150. 417-458-1047. Roby.

USED MOBILE HOMES: Call David at VILLA HOMES IN ROLLA 573-578-8072. Rolla.

BUYING MOBILE HOMES: Call David at VILLA HOMES IN ROLLA 573-578-8072. Rolla.

RARE PICTORIAL HISTORY OF THE KOREAN WAR: published 1954, hardback, 386 pages, \$9.50. 417-532-2045. Lebanon. (Leave message and phone number).

WANTED TO BUY ANTIQUE CARS: Convertible, Corvettes, unrestored, motors, parts considered. 870-324-1154. Ash Flat.

WANTED: Old Pinball Machines and Juke Boxes. 573-424-7200.

WEATHERED BARN WOOD SIDING: 10" wide. 573-729-7226. www.pineridgerustic.com Salem.

LABOR DAY DEADLINES

Due to the upcoming holiday, the following deadlines will be observed:

★ **Weekly Trader** ★ **Thursday, September 8 Edition** ★

Display Advertising Deadline:

Thursday, Sept. 1 at Noon

Classifieds Deadline:

Thursday, Sept. 1 at 4pm



We appreciate your business. Thank you for your continued support.

WEEKLY
TRADER
MAGAZINE

417-532-9131 • 800-665-8875
100 E. Commercial • Lebanon, MO
www.myweeklytrader.com

**Our office
will be closed
Mon., Sept. 5**



Endless Possibilities
FOR YOUR LAND
GREAT VIEWS
BRUSH CLEARING!

- Fence Line Clearing
- Land Clearing
- Road & Trails Opened
- Wood Lot Thinning

Local family owned and operated since 2007

Ben & Jessica Joiner www.gvbrush.com 417-718-5508



Pine Ridge Rustic
Log Home Building Supplies

Services Offered!

- Installation
- Pre-finishing available on interior & exterior
- Dealer for exterior stains

www.pineridgerustic.com

523 CR 2410 • Salem, MO 65560 • Ph: 573-729-7226



- Log Siding
- Beveled Siding
- Car Siding • Red Cedar
- Western Cedar • Pine

NEW MOBILE HOME STOCK: Just received (5) new units, they gotta go! 573-657-2176. amegamobliehomes.com

TRANSFER PUMP: Cost \$215 Selling for \$100. 417-753-2747. Rogersville.

CUSTOM SAW MILLING: 417-533-4607. 417-664-1195. Lebanon.

STIHL FS100RX HAND TRIMMER: Cost new \$350. Now at \$185. Like new. 417-844-4319. Springfield.

LIGHTLY EXPERIENCED GOLF BALLS: \$3 a dozen. 417-818-3469. Strafford.

WORKING STOCK: Blue and Red Heeler puppies. 417-664-5926. Conway.



Wright Spray Foam Insulators, LLC
Commercial & Residential
Call for FREE Estimates!

Ervin Gingerich 417-926-2052
B. Eli Yoder 417-746-4932



Your Friend In The Field

Reliable equipment, fair prices and outstanding service you can count on season after season.

SALES • SERVICE • REPAIR

STAHLMAN Powersports

1387 S. BISHOP AVE., ROLLA
573-364-6944
WWW.STAHLMANPOWERSPORTS.COM

BAD BOY

TRUE MODULARS: 30 to 60 day delivery available, 3 and 4 bedroom 573-657-7040 chateauhomes.net

2004 F150: 5-4 crew 4x4. 151k. Engine needs TLC. \$8000 obo. 573-261-0513. Salem.

1978 RANCHERO ACC: original, except new 351 long block auto GT model. \$12,500. 314-378-9816. St. Charles.

FRANKLIN QUICK-CHANGE REAREND: Aluminum, w/ axles & tubes, brakes. \$650. 573-528-2821. Waynesville.

LIONEL TRAIN SET: Steam engine, tender, caboose and other car, track and transformer. \$195. 573-364-7465. Rolla.

EARLY 1900's CAMEL BACK STEAMER TRUNK: Oak, 5 strap, solid, nice condition. \$95. 573-364-7465. Rolla.



JAMCO BUILDERS

JAMCO Portable Buildings

800-688-2064 • 307 Enterprise Dr. • Seymour, MO • www.jamcobuilders.com

Rent To Own Plan

TINY HOMES: We gottem 573-881-3283

RUGER AR15: w/ Nikon scope, 3-30RD mags and 400 rounds of ammo. Bought new. Like New. \$900. 417-844-4319. Springfield.

REGISTERED HEREFORD & ANGUS BULLS: Home raised, Some Show-Me Select Qualified. 573-701-7828. Belgrade.

1954 CHEVY BEL AIR: 4-door. \$300. No title. 417-859-4401. Marshfield.

NEW ADA HEALTH EQUIPMENT: Scooters, chairs, etc. 573-699-4351. St. James.

SLIGHTLY USED PUZZLES: Will sell or trade. 417-818-3469. Strafford.



PLAD PANTRY

DISCOUNT & SURPLUS FOODS
FRESH PRODUCE LLC
417-532-4700

Fresh Dark Sweet Cherries.....	\$2.25 a lb.
Frozen Broccoli Florets.....	\$1.49 10 oz.
Whipped Salted Butter.....	\$12.99 5 lbs.
Chicken & BBQ Cornbread Pie.....	\$1.99 11.5 lbs.
Dunkin' Mocha Latte Cereal.....	99¢ 11 oz.

1571 State Hwy 64 • Tunas, MO 65764
Hours: 8:30 a.m. to 5:30 p.m. • Closed Wed. & Sun.

Land

For Sale

Douglas Co., Mo • 291.6 Acres +/-



- 75 head ranch carrying capacity
- 250-300 (4x6) bales
- 7 pastures
- Multiple outbuildings
- Incredible views
- Fertilized each spring
- 5-strand perimeter and cross fencing
- 8 auto watering systems
- 9 ponds; 3 ponds stocked with large bass and catfish
- Set of livestock pens with squeeze chute
- 2 wells
- 30x52 living space with 12x52 upper deck
- 4 bed 3 bath ranch home
- Alternative wood burning heating system
- Walk out basement
- All appliances stay



WHITETAIL PROPERTIES REAL ESTATE

HUNTING | RANCH | FARM | TIMBER

Brian Utecht | 417-766-5595

Brian.Utecht@whitetailproperties.com

WHITETAILPROPERTIES.COM

Missouri's Top Land Specialist in 2014, 2015,
2016, 2017, 2018, 2019, 2020 and 2021



**ORDER YOUR NEW CHEVY, BUICK OR GMC
TODAY AND GET EXACTLY WHAT YOU WANT.**



**WE WANT
YOUR TRADE.**

**NEW SHIPMENTS
ARRIVING.**

**ED MORSE
CHEVROLET
BUICK GMC**

ROLLA

FORMERLY FAIRGROUNDS AUTO PLAZA

NEW NAME. SAME TEAM.

100 Fairgrounds Rd., Rolla, MO

573-364-1002

EdMorseChevroletBuickGMCRolla.com